



# International TrailsSYMPOSIUM

**TRAILS LEAD EVERYWHERE!**



## Conference Program

[www.AmericanTrails.org/2013](http://www.AmericanTrails.org/2013)

April 14 - 17, 2013

**Fort McDowell Yavapai Nation Radisson  
Fountain Hills, Arizona**

Photos: Top - courtesy of Mesa Convention & Visitors Bureau  
Bottom - courtesy of Arizona State Parks

## Table of Contents

Welcome to Arizona .....	1
Schedule .....	2
Sponsors & Exhibitors and Exhibit Hall .....	8
Hulet Hornbeck Youth Scholarship Recipients .....	10
Posters and Trail Talk .....	11
Symposium Highlights .....	12
Featured Workshops .....	14
Mobile Workshops .....	16
Core Tracks .....	20
Concurrent Sessions .....	24
Auctions and Anniversaries .....	34
Raffle to Win a Prairie Star Quilt .....	35
Planning Team and American Trails Board .....	36
Questions – Answers – Tips .....	37
Map and Meeting Room Layout .....	Back Cover

## Special Thanks

### Symposium Logo

A big thank you goes out to Paula Bohte with Bohte Design LLC out of Arizona who designed the 2013 International Trails Symposium logo. It captures the signature southwestern Native American pot design in classic desert landscape colors, while displaying Arizona's most recognized symbol, the Saguaro cactus.



### Publication Designer

Design was donated by Arizona Community Foundation with a special thanks to Robbi Graham, who worked tirelessly on the program as well as the registration brochure sent earlier in the year.



## Transportation

Complimentary transportation will be provided to and from the hotels and the Radisson conference center during the entire conference. A schedule will be available at all hotels. The pick-up and drop off locations at the Radisson are noted on the back cover of this program. Transportation will also be provided to and from the offsite "Trails Rock" Party in 30 minute intervals, from 6:30 p.m. – 11:30 p.m. on Monday, April 15. The Radisson also has a complimentary shuttle that can take you into the town of Fountain Hills.

## Bicycle Rental

### Arizona Outback Adventures

Arizona Outback Adventures offers bicycle rentals at an hourly rate and daily rate. They rent road, mountain, bikes for children, comfort and touring, tandem, tag-along bikes, and bike racks. They are located in North Scottsdale at the foot of the McDowell Mountains. If you don't have means to pick your bike up at their location, they offer a delivery service to your hotel as well. Delivery available for 24 hour rental minimum; advance reservations required;



exceptions apply. For prices and reservations, visit their website at [www.aoa-adventures.com](http://www.aoa-adventures.com) or call (480) 945-2881. Store Hours: Monday-Saturday: 9:00 a.m. – 6:00 p.m. and Sunday: 9:00 a.m. – 1:00 p.m.

## Plan Your Extended Stay in Arizona



For the 2013 International Trails Symposium, AZ Trails Travel is our official travel supplier to help all those who are ready to experience Arizona whether they help you get to the Symposium or extend your trip to tour the rest of the different beautiful destinations in Arizona, as well as surrounding states (Nevada, Utah, and New Mexico). They can help you set up hotels,

rental cars, sight-seeing, and much more. They are located in Fountain Hills, AZ. Visit their website at [www.aztrailstravel.com](http://www.aztrailstravel.com) or call (480) 837-8665 or (888) 799-4284.

## Continuing Education Units available

We are delighted to offer interested attendees the opportunity to earn Continuing Education Units (CEUs) through one of the Symposium's new sponsors, the Texas Recreation and Park Society (TRAPS), an authorized independent CEU provider through IACET (International Association for Continuing Education and Training). Go to the Registration Area to purchase and view list of eligible sessions. \$25 flat rate.





## Welcome Trails Enthusiasts!

Arizona is a state that has fully embraced the idea of trails, greenways, and outdoor recreation. In this state, they really do encompass our Symposium Theme, *Trails Lead Everywhere*, and we know you will enjoy the breathtaking views of the Sonoran Desert and the immense trail opportunities in the surrounding countryside.

As we celebrate 25 years of advocacy, American Trails would like to thank the many thousands who have joined us and supported us over the years. The National Trails Symposium, first held in 1971, is our longest-running tradition.

As we mark another milestone in these four decades of conferences, we also celebrate a new direction. Since we are now a worldwide trails community, we are recognizing our broader reach as the International Trails Symposium.

American Trails is thrilled to host our first **International** Trails Symposium in Arizona—an international tourist destination. We want to reach across the oceans to harness our combined wisdom to support and encourage the collective dedication to trail initiatives around the world. The program this time features an international panel of representatives from all over the world to inspire us, international concurrent sessions to provide alternative ways of approaching challenges in the trails world, and our first International Award designation. Our new addition of Core Tracks will provide in-depth trainings on a variety of hot topics that will advance and complement our steadfast concurrent sessions.

Also new this year, is our Hulet Hornbeck Youth Scholarship Program. The Scholarship Fund will provide unique training and mentoring opportunities to inspire young adults to choose a career path so they, too, can leave a lasting legacy on the world—as Hulet did. Please introduce yourself! Scholarship recipients will be introduced during the Opening Keynote Luncheon on Monday, and will be attending events throughout the Symposium.

The heart of the American Trails mission is promoting communication among all trail interests, and we hope that you can join us in this spirit of camaraderie during the Symposium. We are stronger and more effective together, and the Symposium is the perfect way for the trails community to share success stories and lessons learned.

On behalf of the American Trails Board, we welcome you to Arizona!



Bob Searns  
Chair, American Trails Board



Photo by Kathleen Fitzpatrick, CVL Hike Club www.cvlci.com

# Schedule at a Glance

## Friday, April 12, 2013

7:00 a.m. – 10:00 p.m.	<b>Set-up Tent, Exhibit Hall, Landscaping</b>
6:00 p.m. – 9:00 p.m.	<b>Meeting:</b> American Hiking Society Meeting ~ Day 1 <i>(by invitation only)</i> (Yo'w Hospitality Room)

## Saturday, April 13, 2013

7:00 a.m. – 10:00 p.m.	<b>Set-up Tent, Exhibit Hall, Landscaping</b>
8:00 a.m. – 9:00 p.m.	<b>Meeting:</b> American Hiking Society Meeting ~ Day 2 <i>(by invitation only)</i> (Rm #107)
<i>Learn more on page 12</i>	<b>Cyclovia Fountain Hills!</b>
10:00 a.m. – 5:00 p.m.	The Town of Fountain Hills will be closing several of its downtown streets to vehicular traffic, including the famed and aptly named Avenue of the Fountains. OPEN TO THE PUBLIC
5:00 p.m. – 9:30 p.m.	Free Concert in Fountain Park
<i>Learn more on page 14</i>	<b>Featured Workshops:</b>
8:00 a.m. – 5:00 p.m.	Universal Trail Assessment Process (UTAP) & High Efficiency Trail Assessment Process (HETAP) ~ Day 1 (Rm #108)
8:00 a.m. – 5:00 p.m.	Natural Surface Trail Management 2.0: Change Management for a Sustainable Trail Program (Rm #109)

## Sunday, April 14, 2013 (workshops grouped together each day; review the start and end times for each)

7:00 a.m. – 10:00 p.m.	<b>Volunteer Room (Yo'w Hospitality Room)</b>
7:00 a.m. – 9:00 p.m.	<b>Registration &amp; Information (Wassaja Foyer)</b>
7:00 a.m. – 2:00 p.m.	<b>Exhibitors Move into Exhibit Hall &amp; Trail Tools Equipment Expo Set-Up</b>
<i>Learn more on page 16</i>	<b>Mobile Workshops:</b>
6:00 a.m. – 5:30 p.m.	Arizona National Scenic Trail Hike
8:00 a.m. – 12:00 p.m.	Horseback Trail Ride Along the Verde River
8:00 a.m. – 12:00 p.m.	The Incredible Edible Desert Hike
8:00 a.m. – 4:00 p.m.	Goldmine Trail/Hieroglyphic Trail Hike (Moderate)
8:00 a.m. – 4:00 p.m.	Superstition Wilderness Trail Hike
8:30 a.m. – 2:30 p.m.	Rock Climbing in the McDowell Mountains
9:00 a.m. – 2:00 p.m.	Bulldog OHV Management Jeep Tour
12:00 p.m. – 2:30 p.m.	Desert Belle Boat Tour
12:30 p.m. – 4:30 p.m.	Kayaking Tour on the Lower Salt River
12:30 p.m. – 4:30 p.m.	Rafting the Lower Salt River
<i>Learn more on page 14</i>	<b>Featured Workshops:</b>
8:00 a.m. – 5:00 p.m.	Universal Trail Assessment Process (UTAP) & High Efficiency Trail Assessment Process (HETAP) ~ Day 2 (Rm #108)
8:00 a.m. – 11:30 a.m.	Expand Your Trail Crew Leader Skills (Rm #104)
1:00 p.m. – 2:30 p.m.	Weed Free Feed ~ Fact or Fiction? (Rm#105)
1:00 p.m. – 5:00 p.m.	Creating a Trail Maintenance Management Program (Rm #107)
2:00 p.m. – 3:30 p.m.	Federal Trail Data Standards (Rm #109)
10:00 a.m. – 12:00 p.m.	<b>Caucus: Water Trails (Rm #111) (Sponsored by Verde River Blue Trail &amp; Walton Family Foundation)</b>
3:00 p.m. – 4:45 p.m.	<b>1 (1.25-Hour) CONCURRENT SESSION ~ OPEN TO THE PUBLIC</b>
<b>Rm #110</b>	<b>THINKING BEYOND BORDERS: THE CREATION OF THE INTERNATIONAL APPALACHIAN TRAIL</b>
3:30 p.m. – 5:30 p.m.	<b>Caucus: Horse Trails (Rm #111) (Sponsored by American Quarter Horse Association – STEP Program)</b>

**SYMPOSIUM OFFICIALLY BEGINS**  
(all events taking place in Exhibit Hall)

# Schedule at a Glance

2:00 p.m. – 5:00 p.m.	<b>Building Public Awareness for Trails Event: <i>Discover, Learn, and Celebrate Trails</i></b> Music & Presentations	<b>SILENT AUCTION OPENS</b> 2:00 p.m.
5:00 p.m. – 6:30 p.m.	<b>Exhibit Hall ~ OPEN TO THE PUBLIC</b>	<b>Exhibit Hall &amp; Trail Tools Equipment Expo</b> <b>OPEN TO THE PUBLIC</b> 2:00 p.m. – 5:00 p.m.
6:30 p.m. – 8:30 p.m.	<b>Happy Trails Hour (Exhibit Hall) <i>(Sponsored by Okanogan Trail Construction)</i></b>	
	<b>Opening Reception in Exhibit Hall: <i>Welcoming you to the Path!</i></b>	<b>Exhibit Hall &amp; Trail Tools Equipment Expo</b> <b>OPEN TO ATTENDEES ONLY</b> 5:00 p.m. – 8:30 p.m.

## Monday, April 15, 2013

7:00 a.m. – 7:00 p.m.	<b>Volunteer Room (Yo'w Hospitality Room)</b>	
7:00 a.m. – 7:00 p.m.	<b>Registration &amp; Information (Wassaja Foyer)</b>	
7:00 a.m. – 8:00 a.m.	<b>Trail Talk ~ Continental Breakfast &amp; Networking (Wassaja Ballroom)</b>	
8:15 a.m. – 11:15 a.m.	<b>4 (3-Hour) CORE TRACK <u>ONSITE</u> SESSIONS</b>	
<b>Rm # 102</b>	<b>FACT NOT FICTION: MEASURING TRAIL IMPACTS FOR BETTER RESOURCE MANAGEMENT</b>	
<b>Rm #107</b>	<b>HIKERS, MOUNTAIN BIKERS, AND EQUESTRIANS – OH MY!</b>	
<b>Rm #108</b>	<b>3D COLLABORATIVE PLANNING: YOU, ME, AND WE: INDIVIDUAL COMPETENCIES AND INTENTIONAL PLANNING STRATEGIES FOR CLEAR PARTNER AGREEMENTS</b>	
<b>Rm #109</b>	<b>WATER TRAILS: CONNECTING PEOPLE, ENHANCING COMMUNITIES ~ PART 1 <i>(Part 2 in classroom on Tuesday afternoon ~ highly encouraged to attend both)</i></b>	
8:15 a.m. – 9:30 a.m.	<b>5 (1.25-Hour) CONCURRENT SESSIONS</b>	
<b>Rm #110</b>	<b>FEDERAL TRANSPORTATION FUNDS FOR TRAILS</b>	<b>Exhibit Hall, Trail Tools Equipment Expo, &amp; Silent Auction OPEN</b>  8:00 a.m. – 6:00 p.m.
<b>Rm #106</b>	<b>DOTS AND DASHES: CONNECTING PEOPLE TO PLACES WITH TRAILS AND PATHS</b>	
<b>Rm #105</b>	<b>TRAIL INNOVATIONS IN THE DESERT SOUTHWEST: “NEXT-GENERATION” URBAN TRAILS IN TUCSON, AND RESTORATION OF ONE OF AMERICA’S “MOST ENDANGERED” RIVERS IN SANTA FE</b>	
<b>Rm #104</b>	<b>ART OF SUSTAINABLE TRAIL MANAGEMENT – EXAMPLES FROM ACROSS THE GLOBE</b>	
<b>Rm #103</b>	<b>PATHWAYS FOR PLAY: INFUSING PLAY INTO TRAIL NETWORKS TO ENGAGE CHILDREN AND FAMILIES</b>	
9:30 a.m. – 10:00 a.m.	<b>BREAK (Wassaja Foyer)</b>	
10:00 a.m. – 11:15 a.m.	<b>5 (1.25-Hour) CONCURRENT SESSIONS</b>	
<b>Rm #103</b>	<b>THE SOUTH PLATTE RIVER GREENWAY – BUILDING ON A LEGACY</b>	
<b>Rm #104</b>	<b>TRAILS SAVED MY LIFE...</b>	
<b>Rm #105</b>	<b>TRAIL RATINGS: REDUCING INJURIES AND RESCUES THROUGH USER EDUCATION, A CASE STUDY ON ECHO CANYON TRAIL - CAMELBACK MOUNTAIN</b>	
<b>Rm #110</b>	<b>TRAILS AND THE DOJ RULE ON OPDMDS</b>	
<b>Rm #106</b>	<b>SAVING THE RECREATIONAL TRAILS PROGRAM - AGAIN!</b>	
11:30 a.m. – 1:30 p.m.	<b>Opening Keynote Luncheon &amp; International Panel:</b> <b><i>Journeys - Trails that Connect, Trails that Heal – An International Perspective</i></b> (Wassaja Ballroom)	

# Schedule at a Glance

1:45 p.m. – 4:45 p.m.	<b>4 (3-Hour) CORE TRACK ONSITE SESSIONS</b>	<b>Exhibit Hall, Trail Tools Equipment Expo, &amp; Silent Auction OPEN</b>  <b>8:00 a.m. – 6:00 p.m.</b>
<b>Rm #102</b>	CONVERSATIONS ON OHV MANAGEMENT: EXPERIENCES FROM ALASKA AND A PANEL DISCUSSION ON NOHVCC'S NEW PUBLICATION, "CREATING GREAT OHV TRAILS"	
<b>Rm #106</b>	FIRE ON THE MOUNTAIN: RESPONDING TO, RECOVERING FROM, AND PREVENTING THE DEVASTATING EFFECTS OF FIRE ON OUR TRAILS ~ PART 1 ( <i>Part 2 offsite on Tuesday morning ~ highly encouraged to attend both</i> )	
<b>Rm #108</b>	BUILDING TRAIL TOWNS: ENCOURAGING INVOLVEMENT AND BUILDING CAPACITY WITHIN GATEWAY COMMUNITIES TO TRAIL SYSTEMS ~ PART 1 ( <i>Part 2 offsite on Tuesday morning ~ highly encouraged to attend both</i> )	
<b>Rm #107</b>	LEADING QUALITY TRAILS: BEST OF EUROPE	
1:45 p.m. – 3:00 p.m.	<b>6 (1.25-Hour) CONCURRENT SESSIONS</b>	
<b>Rm #110</b>	FOREST SERVICE TECHNOLOGY AND DEVELOPMENT PROGRAM LEADING TRAILS INTO THE 21 <sup>ST</sup> CENTURY	
<b>Rm #103</b>	THE BLUE MOUNTAINS, AUSTRALIA - A PLACE TO KEEP PEOPLE ON THEIR FEET	
<b>Rm #112</b>	TRAILS IN THE URBAN LANDSCAPE	
<b>Rm #104</b>	THE PATH FORWARD: EXPANDING CYCLING AND PEDESTRIAN CONNECTIVITY IN COLUMBIA, MARYLAND	
<b>Rm #105</b>	IF YOU BUILD IT, THEY WILL COME: HOW TO MAKE YOUR COMMUNITY A TRAILS DESTINATION	
<b>Rm #109</b>	REVEAL THE REVENUE TO WHICH YOUR TRAILS LEAD	
3:00 p.m. – 3:30 p.m.	<b>BREAK (Wassaja Foyer) (<i>Sponsored by SRP</i>)</b>	
3:30 p.m. – 4:45 p.m.	<b>6 (1.25-Hour) CONCURRENT SESSIONS</b>	
<b>Rm #112</b>	DESIGN A TRAIL WORTH TRAVELING TO	
<b>Rm #109</b>	PATHS TO PARTICIPATION: HOW TO DEVELOP ENGAGING CITIZEN INPUT PROCESSES	
<b>Rm #110</b>	BEYOND THE TRAIL – EXPLORING NATIONAL TRAIL CORRIDOR CREATION WITH BLM POLICY PIONEERS	
<b>Rm #104</b>	PARKS PARADIGM SHIFT: THE MOUNTAIN BIKE TRAIL THAT CHANGED AN AGENCY	
<b>Rm #103</b>	TRAILS LEAD EVERYWHERE...AND ARE FOR EVERYONE!	
<b>Rm #105</b>	NEW FORCE – THE GROWING CHINA'S NATIONAL TRAIL	
4:30 p.m. – 6:00 p.m.	<b>Happy Trails Hour (Exhibit Hall) (<i>Sponsored by Mesa Convention &amp; Visitors Bureau</i>)</b>	
5:00 p.m. – 5:30 p.m.	<b>POSTER Presentations (Exhibit Hall)</b>	
7:00 p.m. – 11:00 p.m.	<b>"Trails Rock" Party at La Puesta del Sol</b>	

## Tuesday, April 16, 2013

7:00 a.m. – 8:00 p.m.	<b>Volunteer Room (Yo'w Hospitality Room)</b>
-----------------------	---

# Schedule at a Glance

7:00 a.m. – 8:00 p.m.	Registration & Information (Wassaja Foyer)	
7:00 a.m. – 8:00 a.m.	Continental Breakfast (Wassaja Ballroom)	
7:00 a.m. – 1:00 p.m.	2 (6-Hour) CORE TRACK <u>OFFSITE</u> SESSIONS ~ REGISTRATION REQUIRED	
<b>OFFSITE (Pre-registration is required)</b>	FIRE ON THE MOUNTAIN: RESPONDING TO, RECOVERING FROM, AND PREVENTING THE DEVASTATING EFFECTS OF FIRE ON OUR TRAILS ~ PART 2 ( <i>Part 1 in classroom on Monday afternoon ~ highly encouraged to attend both</i> )	
<b>OFFSITE (Pre-registration is required)</b>	BUILDING TRAIL TOWNS: ENCOURAGING INVOLVEMENT AND BUILDING CAPACITY WITH THE GATEWAY COMMUNITIES TO TRAIL SYSTEMS ~ PART 2 ( <i>Part 1 in classroom on Monday afternoon ~ highly encouraged to attend both</i> )	
8:00 a.m. – 12:00 p.m.	2 (4-Hour) CORE TRACK <u>OFFSITE</u> SESSIONS ~ REGISTRATION REQUIRED	
<b>OFFSITE (Pre-registration is required)</b>	DESIGNING TRAILS THAT CONNECT CHILDREN TO SCHOOL, PARKS, AND FUN	
<b>FULL (Registrations no longer accepted)</b>	UTILIZING GPS AND GIS TECHNOLOGY TO DEVELOP EFFECTIVE TRAIL MANAGEMENT STRATEGIES ~ PART 1 ( <i>Part 2 in classroom on Tuesday afternoon ~ highly encouraged to attend both</i> )	
<i>Learn more on page 16</i>	Mobile Workshops:	<b>Exhibit Hall, Trail Tools Equipment Expo, &amp; Silent Auction OPEN</b>  <b>10:00 a.m. – 6:30 p.m.</b>  <b>EXHIBIT HALL OFFICIALLY CLOSES AT 6:30 p.m.</b>
8:00 a.m. – 12:00 p.m.	Kayaking Tour on the Lower Salt River	
8:00 a.m. – 12:00 p.m.	Horseback Trail Ride Along the Verde River	
8:00 a.m. – 12:00 p.m.	The Incredible Edible Desert Hike	
8:00 a.m. – 12:00 p.m.	Tour Scottsdale’s Award-Winning Public Art, Indian Bend Wash Path, and Downtown	
8:00 a.m. – 12:00 p.m.	Tempe Rio Salado Town Lake, Downtown Mill Avenue, Arizona State University	
8:00 a.m. – 12:00 p.m.	Guided Mountain Bike Ride at McDowell Mountain Regional Park	
8:00 a.m. – 12:00 p.m.	Petroglyph Hike	
8:00 a.m. – 12:00 p.m.	Introduction to the Sonoran Desert	
8:00 a.m. – 12:00 p.m.	Sycamore OHV Management UTV Ride	
8:00 a.m. – 12:00 p.m.	Featured Workshop: Trail Fundamentals and TMOs: Cornerstones of Effective Trail Management (Rm # 110)	
12:00 p.m. – 1:00 p.m.	Box Lunch & Networking (Wassaja Foyer)	
1:15 p.m. – 4:15 p.m.	2 (3-Hour) CORE TRACK <u>ONSITE</u> SESSIONS	
<b>Rm #107</b>	DEVELOPING THE TRAIL PLAN THAT PAYS: SOLUTIONS-BASED TRAIL ASSESSMENT AND PLANNING	
<b>Rm #102 FULL (Registrations no longer accepted)</b>	UTILIZING GPS AND GIS TECHNOLOGY TO DEVELOP EFFECTIVE TRAIL MANAGEMENT STRATEGIES ~ PART 2 ( <i>Part 1 offsite on Tuesday morning ~ highly encouraged to attend both</i> )	
1:15 p.m. – 5:15 p.m.	3 (4-Hour) CORE TRACK <u>ONSITE</u> SESSIONS	
<b>Rm #109</b>	DRAFT FINAL RULE – ACESSIBILITY GUIDELINES FOR TRAILS, CAMPING AND PICNIC FACILITIES, VIEWING AREAS, AND BEACH ACCESS ROUTES. WHAT WORKS, BEST PRACTICES, AND ACCESSIBLE TRAIL SURFACES	

# Schedule at a Glance

	<b>Rm #110</b>	<b>WATER TRAILS: CONNECTING PEOPLE, ENHANCING COMMUNITIES ~ PART 2</b> ( <i>Part 1 in classroom on Monday morning ~ highly encouraged to attend both</i> )
	<b>Rm #112</b>	<b>EQUESTRIAN TRAILS: VISIONING THE FUTURE</b>
1:15 p.m. – 3:15 p.m.		<b>5 (2-Hour) CONCURRENT SESSIONS</b>
	<b>Rm #108</b>	<b>DATA LEADS TO EVERYONE: CREATING WEB MAPS FOR ENGAGEMENT AND GIS APPLICATION TO THE TRAILS PROCESS</b>
	<b>Rm #103</b>	<b>HEALTHY PARTNERSHIPS BUILD HEALTHY TRAILS</b>
	<b>Rm #104</b>	<b>TELLING A BETTER STORY</b>
	<b>Rm #105</b>	<b>DESTINATION TRAILS: CONNECTING PEOPLE &amp; PLACES TO BRING VITALITY TO COMMUNITIES</b>
	<b>Rm #106</b>	<b>EMPOWERING THE NEXT GENERATION OF TRAIL STEWARDS</b>
3:15 p.m. – 3:45 p.m.		<b>BREAK (Wassaja Foyer)</b>
3:45 p.m. – 5:00 p.m.		<b>5 (1.25-Hour) CONCURRENT SESSIONS</b>
	<b>Rm #103</b>	<b>TRAINING AND RESOURCES FOR BUILDING BETTER TRAILS</b>
	<b>Rm #108</b>	<b>TRAFFIC ON THE TRAIL: USER COUNTS</b>
	<b>Rm #105</b>	<b>BUILDING A TRAIL TO VOLUNTEER MANAGEMENT</b>
	<b>Rm #106</b>	<b>TRAIL HERITAGE &amp; HISTORY: POWERFUL ELEMENTS OF THE COMPLETE TRAIL</b>
	<b>Rm #104</b>	<b>CREATION OF THE JEJU OLLE TRAIL (SOUTH KOREA) AND THE BIRTH OF A WORLD TRAIL NETWORK</b>
5:00 p.m. – 6:30 p.m.		<b>Happy Trails Hour (Exhibit Hall)</b> ( <i>Sponsored by the Yavapai Trails Association/Prescott Mile-High Trail System</i> )
<b>6:00 p.m.</b>		<b>Silent Auction Closes</b>
<b>6:30 p.m.</b>		<b>Exhibit Halls Closes</b>
6:30 p.m. – 9:00 p.m.		<b>Exhibit Hall Pre-Breakdown (exhibitor booths only)</b>
7:00 p.m. – 10:00 p.m.		<b>American Trails Awards Banquet: <i>On the Path of Excellence</i> ~ Co-Sponsored by: Coe and Van Loo Consultants, Inc. National Trails Awards Presentations &amp; Celebration of 25 Years of American Trails (Wassaja Ballroom)</b>

## Wednesday, April 17, 2013

7:00 a.m. – 6:00 p.m.		<b>Volunteer Room (Yo'w Hospitality Room)</b>
8:00 a.m. – 4:00 p.m.		<b>Registration &amp; Information (Wassaja Foyer)</b>
7:00 a.m. – 10:00 a.m.		<b>Exhibit Hall Breakdown (exhibitor booths &amp; items in tent)</b>
7:00 a.m. – 8:15 a.m.		<b>Trail Talk ~ Continental Breakfast &amp; Networking (Wassaja Ballroom)</b>
8:30 a.m. – 11:30 a.m.		<b>1 (3-Hour) CORE TRACK ONSITE SESSION</b>
	<b>Rm #108</b>	<b>AGENCY/ORGANIZATION COLLABORATION: CREATING AN ENDURING LOVE FEST</b>
8:30 a.m. – 9:45 a.m.		<b>9 (1.25-Hour) CONCURRENT SESSIONS</b>
	<b>Rm #102</b>	<b>TRAIL DESIGN AND CONSTRUCTION IN MOZAMBIQUE: BUILDING A TRAIL PROGRAM FOR TRANSPORTATION AND TOURISM IN GORONGOSA NATIONAL PARK</b>
	<b>Rm #113</b>	<b>RESEARCH IN RECREATIONAL CONFLICT: WHAT IT TEACHES US ABOUT BETTER TRAIL DESIGN AND MANAGEMENT</b>
	<b>Rm #109</b>	<b>THE BUSINESS OF TRAILS – CASE STUDIES OF FIVE CANADIAN TRAILS</b>
	<b>Rm #110</b>	<b>ENHANCING TRAIL ACCESSIBILITY, CONNECTIVITY, AND OUTDOOR DEVELOPED AREAS WITH MODERN TECHNOLOGIES</b>
	<b>Rm #103</b>	<b>TRAILS UNLIMITED (TU): “BUILDING BRIDGES” AN EASIER WAY OF WORKING WITH THE US FOREST SERVICE</b>



# Schedule at a Glance

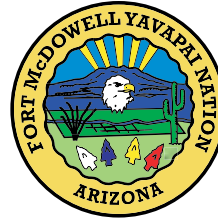
	<b>Rm #106</b>	<b>CREATING TRAILS AND BIKE SKILLS PARKS IN URBAN AREAS</b>
	<b>Rm #105</b>	<b>PLANNING AND DESIGNING CROSS COUNTRY SKIING AND WINTER TRAILS IN AN ERA OF CLIMATE CHANGE</b>
	<b>Rm #112</b>	<b>SOMETHING FOR NOTHING, SOMETHING FOR EVERYONE – INTRODUCING THE TRI-MODAL LEISURE CORRIDOR</b>
	<b>Rm #104</b>	<b>HAVE TRIMBLE, WILL TRAVEL: NATIONAL TRAILS INVENTORY OF THE US FISH &amp; WILDLIFE REFUGE SYSTEM</b>
8:30 a.m. – 11:30 a.m.		<b>YOUTH WRAP-UP SESSION: 20/something Vision: Youth Scholars Assessment of 2013 ITS ~ OPEN TO THE PUBLIC (Rm # 107)</b>
9:45 a.m. – 10:15 a.m.		<b>BREAK (Wassaja Foyer)</b>
10:15 a.m. – 11:30 a.m.		<b>8 (1.25-Hour) CONCURRENT SESSIONS</b>
	<b>Rm #109</b>	<b>THE BUSINESS OF TRAILS – AN AUSTRALIAN EXAMPLE</b>
	<b>Rm #105</b>	<b>DEVELOPING YOUR OPERATIONS/MAINTENANCE MANUAL</b>
	<b>Rm #102</b>	<b>BLACK CANYON TRAIL: LINKING ARIZONA COMMUNITIES PAST AND PRESENT</b>
	<b>Rm #103</b>	<b>A IS FOR ACCESS</b>
	<b>Rm #112</b>	<b>THE NRT PROGRAM: NATIONAL RECOGNITION FOR YOUR LOCAL TRAIL</b>
	<b>Rm #106</b>	<b>BLM YEAR 2020—A CLEAR VISION FOR TRAVEL AND TRANSPORTATION MANAGEMENT, PLANNING, AND IMPLEMENTATION</b>
	<b>Rm #104</b>	<b>RAILS-WITH-TRAILS: THE LATEST FACTS AND TRENDS</b>
	<b>Rm #110</b>	<b>NAVIGATING MAP-21: “MAXIMIZE FEDERAL FUNDING FOR YOUR TRAIL”</b>
11:45 a.m. – 2:00 p.m.		<b>Closing Keynote Luncheon: Celebrating the Human Spirit! (Wassaja Ballroom) Breaking Barriers and Transforming Lives ~ Charles Thomas KEYNOTE: Embracing Adversity and Challenge... an Extraordinary Journey ~ Janine Shepherd</b>
<b>2:00 p.m.</b>		<b>SYMPOSIUM OFFICIALLY CLOSES</b>
<b>Post Conference Activities &amp; Meetings</b>		
2:30 p.m. – 5:30 p.m.	<b>Rm #106</b>	<b>Meeting: BLM Travel Management Team ~ Day 1 (by invitation only)</b>
2:30 p.m. – 6:00 p.m.	<b>Rm #104/05</b>	<b>Meeting: State Trail Administrators Training Meeting ~ Day 1</b>
2:30 p.m. – 6:00 p.m.	<b>Rm #104/05</b>	<b>Meeting: National Trails Training Partnership (NTTP) Meeting ~ OPEN TO THE PUBLIC</b>
6:00 p.m. – 8:00 p.m.		<b>Volunteer Recognition Party at Handlebar J's (Sponsored by Scottsdale CVB)</b>
<b>Thursday, April 18, 2013</b>		
7:00 a.m. – 5:00 p.m.		<b>Exhibit Hall Tent and Landscaping Breakdown</b>
8:00 a.m. – 5:00 p.m.	<b>Rm #106</b>	<b>Meeting: BLM Travel Management Team ~ Day 2 (by invitation only)</b>
8:00 a.m. – 5:00 p.m.	<b>Rm #104/05</b>	<b>Meeting: State Trail Administrators Training Meeting ~ Day 2 (by invitation only)</b>
<b>Friday, April 19, 2013</b>		
8:00 a.m. – 5:00 p.m.	<b>Rm #106</b>	<b>Meeting: BLM Travel Management Team ~ Day 3 (by invitation only)</b>
9:00 a.m. – 12:00 p.m.	<b>Rm #104/05</b>	<b>Meeting: State Trail Administrators Training Meeting ~ Day 3 (by invitation only)</b>

# Sponsors and Exhibitors

## Saguaro



## Desert Willow



## Cottonwood



## Agave



## Cholla



# Sponsors and Exhibitors

## Visit with exhibitors

Make time to visit our Exhibitors at the American Trails International Trails Symposium.

Check out the websites of our sponsors to learn about their products and services.

Contacts for our Exhibitors and Sponsors can be found online at [www.AmericanTrails.org/2013/sponsors.html](http://www.AmericanTrails.org/2013/sponsors.html).

Over 100 exhibitors are taking part in the 21st American Trails International Trails Symposium. Before you enter the exhibit hall, you will can take a stroll through our trails and greenways system complete with a City Park, Labyrinth, and even a flush restroom, with landscaping in abundance.

And as you enter the exhibit hall, you will be welcomed by an historic trail bridge and the Trail Tools Area.

While in the exhibit hall, don't miss the great opportunity to view the latest in trails technology, equipment, planning, and programs. View many of our exhibitor's products "along the trail" and don't forget to take part in the Trail Tools Equipment Expo just steps away from the exhibit hall. View the exact location on the map on the back of the program.

Special thanks are extended to Aztec Engineering Group, Inc. for their generous donation of time, experience, and coordinating the landscaping and design of the exhibit hall and the trails and greenways system.



## Manzanita

### Exhibitors

Asphalt Systems / USA Soy Solutions  
Bellfree Contractors, Inc.  
Beneficial Designs  
Berntsen International, Inc.  
Bikepath Country  
Canycom USA, Inc.  
Contech Engineered Solutions  
Creative Pultrusions, Inc.  
E.T. Techtonics, Inc.  
Eco-Counter  
Erica Fielder Studio  
Gail Materials  
GameTime  
GatorBridge™ & GatorDock™  
GroveSite  
Interpretive Graphics Signs & Systems  
I-Treks  
J2 Engineering & Environmental Design  
Kafka Granite  
K Design  
Kalamazoo Materials, Inc.  
Kay-Linn Enterprises  
Northwest Woodland Services, Inc.  
Paris Equipment Manufacturing, Ltd.  
Pioneer Bridges  
Plastic Recycling of Iowa Falls, Inc.  
PlayCore  
Recreation Solutions USDA Forest Service  
Ridenow Powersports  
Rockart Signs and Markers  
Salsco, Inc.  
Singletrack Trails  
Stabilizer Solutions, Inc.  
Sutter Equipment Company, Inc.  
SWECO Products, Inc.  
TechniSoil Global Inc.  
Terrabilt Wayfinding Systems  
The Acorn Group / Acorn Naturalists  
Tierra Right of Way Services  
TriActive America  
Tour-Mate Systems  
Vermeer  
Waterford Press



Photo by Kathleen Fitzpatrick  
CVL Hike Club [www.cvl.com](http://www.cvl.com)

### Nonprofit Exhibitors

American Conservation Experience  
American Discovery Trail Society  
Arizona Trail Association  
Back Country Horsemen of America  
Black Canyon Trail Coalition  
California Trails and Greenways Conference  
Dayton, Ohio Region  
Irvine Ranch Conservancy and Natural Landmarks  
Jeju Olle Trail  
National Off-Highway Vehicle Conservation Council  
Nez Perce National Historic Trail  
Pennsylvania Equine Council  
Rails-to-Trails Conservancy  
Redding CVB  
Santa Fe Trail Association  
Southwest Conservation Corps  
Town of Pinetop-Lakeside/TRACKS (AZ White Mountains Trail System)  
Tread Lightly!

### Tables

AZ ASLA Chapter  
Advanced Resource Solutions, Inc.  
Arizona Horse Council  
Arizona Parks and Recreation Assn.  
Atkins  
Bass Pro Shops  
City of Phoenix Parks & Recreation and Streets Department  
Envirosigns, Ltd.  
Integrated Touch Somatic Therapy  
Pima Trails Association  
Project Groundwork  
Quad Cities CVB  
Western Wood Preservers Institute  
Wheeler



# American Trails establishes Hulet Hornbeck Youth Scholarship Fund

The Hulet Hornbeck Youth Scholarship Fund will provide training and mentoring opportunities at the American Trails International Trails Symposium to inspire young adults to choose a career path so they, too, can leave a lasting legacy on the world—as Hulet did. Nineteen youth, ages 18 to 26, are attending the Symposium on scholarship this year to learn more about the profession of trails, trails planning, and trails management. These young men and women are coming from all over the United States, including Canada.

We want the youth to interact with Symposium participants and we hope you are willing to meet and talk with them about your area of expertise! Your attendee badge has a color coded sticker which corresponds to the area you noted on your registration. Don't have a sticker? Come by the registration area and pick one up!

Go to [www.americantrails.org/2013/hulet.html](http://www.americantrails.org/2013/hulet.html) to find out more about the Hulet Hornbeck Youth Scholarship Program and view the sponsors, as well as make a donation.

Join the youth Wednesday, April 17, 8:30-11:30 a.m. for their wrap-up session "20-Something Vision: Youth Scholars' Assessment of ITS 2013." Open to the public.

## Categories of Expertise

A color-coded guide to the following categories is included on a flyer in all attendee bags:

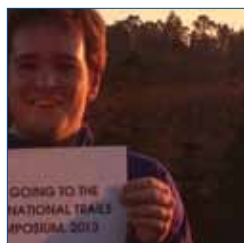
- GIS
- Products & Services
- Funding & Fundraising
- Partnerships & Volunteers
- Non-Profit Management
- Policy
- Resource Management
- Outdoor Recreation Planning
- Design & Construction
- Promotion

## Introducing The Youth!

Check the name badges and welcome those that have "Youth Scholarship Recipient" written on their badges.



**Grecia Nunez**  
Sierra Vista Trail  
Las Cruces, New Mexico



**Jasper Hitchen**  
Nimitz Way Trail from Inspiration Point  
Tilden Regional Park, Berkeley, California



**Jessica Voss**  
Lower Salt River Nature Trail  
Ft. McDowell, Arizona



**Christopher "Woofie" Kaiser**  
Ship Harbor, Acadia National Park  
Tremont, Maine



**Anesa Owen**  
Schuylkill River Trail  
Berks County, Pennsylvania



**Kristen Schulte**  
Yellowstone Natl Park  
Boiling & Gardner Rivers, Wyoming



**Katie Pitstick**  
Danada Trail  
Wheaton, Illinois



**Joseph Snowdon**  
Long Trail on Mount Mansfield  
Underhill, Vermont



**Mike Beach**  
University of Wisconsin-Madison Arboretum  
Madison, Wisconsin



**Aaron Brown**  
Vera Katz Eastbank Esplanade  
Portland, Oregon



**Sam Brakeley**  
Gulf of Slides Trail  
Mount Washington, New Hampshire



**Natalie Warren**  
Minnehaha Falls  
Minneapolis, Minnesota



**Miya Akiyama**  
Martin Goodman Trail  
Toronto, Ontario Canada



**Jon Gellings**  
Moose Track Trail, BLM Campbell Tract Facility  
Anchorage, Alaska



**Chrissy Webb**  
Riverfront Park  
Billings, Montana



**Melinda Ward**  
Frick Park  
Pittsburgh, Pennsylvania



**Marissa Jager**  
Deer Leap Trail  
Killington, Vermont



**Stephen Bafumi**  
Staircliff Trail  
New Paltz, New York

## Not pictured:

**Jacob Zunino**  
Las Vegas, Nevada



## Poster Gallery

Beautiful and educational posters will be displayed in the Exhibit Hall during show hours. Individuals displaying posters will have an opportunity to share their "story" and to meet with interested attendees during...

### Happy Trails Hour in the Exhibit Hall Tent

Monday, April 15 between 5:00 and 5:30 p.m.

## Poster Presentations

- **Biking Through History: The Benefits of Incorporating Trails and Historic Preservation**  
Catherine Garner – University of Georgia
- **Cultural Routes: Tangible and Intangible Trails**  
Jamee Nichole Fiore – University of Georgia
- **Curriculum Development for Trail Engineering & Trail Management**  
Jerry L. Ricciardo – Eastern Michigan University
- **Depot Trail Pedestrian Bridge, Gainesville, Florida**  
Joshua Noftz – Reynolds, Smith & Hills
- **Emergency Responder Project on the White Mountains Trails System**  
Nick Lund - TRACKS
- **Motoring Along in Minnesota**  
Ingrid Schneider – University of Minnesota
- **Safe in the Saddle? Perceptions of Bike Safety**  
Ingrid Schneider – University of Minnesota
- **Signing the Intertwine: How to Build a Multi-Agency Trail System Through Signage**  
Robert Spurlock - Metro (Portland, Oregon)
- **Technology at the Trailhead: Using RFID, GSM, and Web Technology to Control Access to Trails and Generate User Data and Fun Statistics**  
Meurant Botha - African Mountain Bike Association
- **Trans Canada Trail**  
Jane Murphy – Trans Canada Trail
- **Transportation Partnerships: Urban Bike Sharing Programs in National Parklands**  
Julia Murphy – City of San Antonio, Office of Sustainability
- **Working Together: Restoration of the Juan de Anza National Historic Trail in the Sonoran Desert National Monument**  
Thomas Hulen – Friends of the Sonoran Desert National Monument

## Trail Talk ~ Wassaja Ballroom

Enjoy your first coffee of the day while talking trails with your peers!

Early risers, we are offering an opportunity to do some networking with trail experts and peers on Monday, April 15 and Wednesday, April 17, in the Wassaja Ballroom. We have invited experts in various trail related areas to convene a topic table and facilitate an informal discussion/exchange of ideas during breakfast.

If there is something that YOU would like to lead a discussion on, extra tables and table tents will be available so you can convene a group to discuss your favorite topic.

### Monday, April 15 7:00 to 8:00 a.m.

- **Hand Cycling**  
Mark Flint, Southwest Trail Solutions; Steve Anderson, Pima County Natural Resources, Parks & Recreation; Greg Hockensmith, AZ Lift & Care Specialists
- **Horsemanship Safety on the Trail**  
Fred Bruce, Certified Horsemanship Association (CHA)
- **Water Trails**  
Jamie Mierau, American Rivers; Risa Shimoda, River Management Society

### Monday, April 15 AND Wednesday, April 17 7:00 to 8:00 a.m.

A sampling of other Trail Topics on both Monday and Wednesday will include:

- Accessible Trails
- Bicycling Trails
- Creative Funding for Trails
- Equestrian Trails
- Hiking Trails
- Kids and Trails
- Motorized Trails
- Trail Designations (National Scenic, National Historic, National Recreation Trails)
- Rail-Trails
- Snow Trails
- Trails and Tourism
- Trails and Wildlife
- **CONVENE YOUR OWN SESSION!** Blank topic table signs will be available.

## Cyclovia Fountain Hills A Celebration of Healthy Living

**Saturday, April 13 from 10:00 a.m. to 5:00 p.m.**

**Cost: Free – Open to the Public**

**Location: Fountain Park**

**Free Concert in Fountain Park follows: 5:00 p.m. - 9:30 p.m.**



To kick off the International Trails Symposium, the Town of Fountain Hills will host its first annual Cyclovia (aka "bike path"). The Town will close the Avenue of the Fountains to vehicular traffic to celebrate healthy lifestyles.

Cyclovia Fountain Hills is a free family-friendly event, welcoming cycling enthusiasts, walkers, runners, skaters, strollers, and all others to experience their "open streets." It is an opportunity to learn about the community, take part in a variety of fun activities and exhibits including: health and fitness demonstrations, Yoga and Zumba classes, guided tours and hikes, a Farmers Market, arts vendors, live music, and many other activities. Learn more at [www.cycloviaFH.com](http://www.cycloviaFH.com). All attendees are invited to this FREE event!

## Building Public Awareness for Trails Discover, Learn, and Celebrate Trails

**Sunday, April 14 from 2:00 to 5:00 p.m.**

**Cost: Free – Open to the Public**

**Location: Exhibit Hall Tent**

This event will provide the local community and attendees with an opportunity to visit exhibitors and learn about the Symposium and trails around the State and country. The exhibit hall will be open to attendees, guests, and local trail enthusiasts free of charge. In addition, local groups from around the Phoenix area will provide information tables, presentations, and workshop activities for all ages.

## Opening Reception in the Exhibit Hall Welcoming You to the Path

**Sunday, April 14 from 6:30 to 8:30 p.m.** (Immediately following Happy Trails Hour)

**Cost: Included with Registration (\$29.00 for guests)**

**Location: Exhibit Hall Tent**

The event begins with an inspiring dance performance by local Native American tribes followed by a warm welcome from these Symposium partners:

- Bryan Martyn, Director, Arizona State Parks
- Tom Fitzgerald, Lands Administrator, Central Arizona Project (CAP)
- Linda Kavanagh, Mayor, Town of Fountain Hills
- Ray Suazo, Director of BLM, Arizona
- Neil Bosworth, Forest Supervisor, Tonto National Forest (invited)
- Bob Ratcliffe, Program Chief, Conservation and Outdoor Recreation, National Park Service

Check out the extensive exhibit hall and meet with vendors offering you the latest in cutting-edge products and services. Enjoy a Southwestern Wrap (be sure to bring your meal ticket!) and a no-host bar, as you visit with past acquaintances and meet new friends!

We encourage you to peruse Fountain Hills and the surrounding cities following the Opening Reception. Fountain Hills is famous for their iconic fountain. At its full height of 560 feet, the fountain is higher than the Washington Monument. It is also 10 feet taller than Notre Dame Cathedral, and 110 feet higher than the Great Pyramid of Cheops in Egypt. The fountain operates each hour on the hour for 15 minutes from 9:00 a.m. to 9:00 p.m.

## Opening Keynote Luncheon Making Connection in a World of Trails

**Monday, April 15 from 11:30 a.m. to 1:30 p.m.**

**Cost: Included with Registration (\$29.00 for guests)**

**Location: Wassaja Ballroom**

### Introduction to the Hulet Hornbeck Youth Scholarship Recipients

### Trails that Connect, Trails that Heal - An International Perspective International Panel ~ Moderated by Robert M. Searns, Chair, American Trails Board and Owner, The GreenWay Team

*The trails movement is embraced by peoples worldwide. Across the globe, trails are about recreation, fitness and enjoyment and also about tourism and economic development. Most importantly, they are about connectivity of people to landscapes, cultures and to their inner selves. Enjoy a stimulating and informative discussion by stellar advocates from four continents as they share their personal perspectives about the value of trails.*



**Dr. Hui Jung**

**Director, Korean Trails & Culture Foundation, South Korea**

Hui helped found the National Trails System in Korea, is a member of the Board of Directors for the Korean Trails Culture Foundation, and sits on the committee for the World Trails Network. She established the Korean Trails Culture Foundation and organized the Teenager's Walking Travel School for disadvantaged youth.



**Kathy Loper**

**Founder, Kathy Loper Events, USA**

Kathy has been an avid long-distance runner her entire life. Her love for the sport morphed into a career of international running event planning, which has taken her all over the world. To date, she has held events in Antarctica, China, Chile, Indonesia, Cambodia, and Tanzania.



**Bernard Ollivier**

**Walking Advocate & Author, France**

At age 62, Bernard decided to walk the Silk Road, a 12,000 kilometer trek from Istanbul, Turkey to Xi'an, China to give his life a different perspective. As a walking advocate, he has written several books espousing the healing benefits of walking outdoors.



**Galeo Saintz**

**Founding Member, Rim of Africa Trail, South Africa**

Galeo is the co-founder of two of South Africa's leading hiking trails, the Rim of Africa Trail and the Eden to Addo Great Corridor Hike. He is a conservation adventurer and pioneer of experiences that raise awareness and funds for conservation projects. Since November 2012 he is Chairman of the World Trails Network Committee.

## "Trails Rock" Party at La Puesta del Sol

**Monday, April 15 from 7:00 to 11:00 p.m.**

**Cost: Included with Registration** (\$59.00 for guests - advance ticket sales only)

**Location: La Puesta del Sol at Fort McDowell Adventures** (5 miles from Radisson)

Complimentary transportation will be provided to and from all three of the host hotels. The buses will have which hotel they are going to/from – please be sure to get on the right bus when leaving the party! Transportation starts at 6:30 p.m. and runs through 11:30 p.m. (in less than 30 minute intervals).

Come enjoy Southwestern Fajitas, friends, dancing, and a Live Auction at La Puesta del Sol and network with other trail enthusiasts. La Puesta sits perched atop a wildflower-carpeted hill in the northernmost region of the Sonoran Desert. With panoramic 360-degree views of five surrounding mountain ranges (McDowell, Four Peaks, Mazatzal, Superstition, and Red Mountain), La Puesta offers a picture perfect setting to experience a taste of Arizona's perfect weather, stunning sunsets, clear skies, and peaceful surroundings.

### Live Auction

Don't forget your wallet! Bid on great items provided by generous donors during the Live Auction and support American Trails at the same time!

### Music

Enjoy dining and dancing to the flavor of the area with Georgia Chrome, a Tempe group that covers it all, from brand new country to old school Americana.



## American Trails 21st National Trails Awards Banquet On the Path of Excellence

**Tuesday, April 16 from 7:00 to 10:00 p.m.**

**Cost: Included with Registration** (\$49.00 for guests)

**Location: Wassaja Ballroom (Co-Sponsored by: Coe & Van Loo Consultants)**

The National Trails Awards program is one way American Trails recognizes the exemplary people who work to create a national system of trails to meet the recreation, health, and travel needs of Americans – including those abroad. We will honor outstanding efforts of agencies, trail professionals, the private sector, corporations, advocates, media, those creating healthier communities and people, groups dedicated to getting kids out on trails and into the outdoors, and others. Celebrate 25 years of American Trails and more exciting anniversaries in the trails community. Join us for this gala affair (business or cocktail attire) and celebrate the worthy recipients of these awards:

- |  |  |
|--|--|
| ■ The coveted "Hulet Hornbeck" Award     | ■ Outstanding Trail Sharing Award          |
| ■ Lifetime Service Award                 | ■ Partnership Award                        |
| ■ International Trails Award (New Award) | ■ Planning/Design Award                    |
| ■ Developer Award                        | ■ State-of-the-Art Technology Award        |
| ■ Best Trails State Award                | ■ Trails and the Arts Award                |
| ■ Community Service Award                | ■ Trails for Health Award                  |
| ■ Corporate Award                        | ■ Trails Public Service Award              |
| ■ Kids and Trails Award                  | ■ Trail Advocacy Award (1 award per State) |
| ■ Outstanding Media Award                | ■ Trail Worker Award (1 award per State)   |

## Closing Keynote Luncheon Celebrating the Human Spirit

**Wednesday, April 17 from 11:45 to 2:00 p.m.**

**Cost: Included with Registration** (\$29.00 for guests)

**Location: Wassaja Ballroom**

### American Trails Meeting of the Membership & Board Election

**The Future of America's Trails ~ Jeff Spellman, Retired, Phoenix Parks & Recreation and "Hulet Hornbeck" Youth Scholarship Recipients**

**Breaking Barriers and Transforming Lives ~ Charles Thomas, Pacific West Regional Manager of Youth Programs, National Park Service**

How do we engage an audience that is more reflective of the diversity of America on our trails? Charles has created a variety of award-winning programs dedicated to enriching the lives of underserved urban populations, especially high-risk youth and their families, by introducing them to the therapeutic value of spending time in wild places and open spaces. Charles will identify some of the key barriers, real and perceived, that have kept many minority populations on sidewalks and away from trails and offer some solutions and tools for effective outreach.



Charles Thomas

### Keynote Address: Janine Shepherd Embracing Adversity and Challenge – An Extraordinary Journey

A champion cross-country skier in training for the Winter Olympics, Janine Shepherd's life was irrevocably altered when she was hit by a truck on a bike ride. Janine's story takes us on an amazing journey. An odyssey with so many twists and turns, it mirrors the path we travel in our own lives, and in our work, every day. Rising like a phoenix – Janine is a testament to the power of the human spirit.

*"Janine is a change agent. She has an extraordinary ability to ignite people's spirits and move them to find the real potential of their lives; her story inspires people around the world."* – Deepak Chopra

Janine is the best-selling author of *Never Tell Me Never* and an international renowned speaker who travels extensively in Australia and all over the world sharing her story. Following her talk, Janine will hold a book signing. You can purchase her book, *Never Tell Me Never*, for \$25 at the signing (taking place in the back of the Wassaja Ballroom following her talk) or any time during the conference at Merchandise in the Registration Area.



Janine Shepherd



## Saturday, April 13 - Sunday, April 14

### UTAP and HETAP

Coordinated by Beneficial Designs, Inc. and American Trails, proud members of the National Trails Training Partnership

8:00 a.m. – 5:00 p.m., Saturday and Sunday

Cost: \$467.00 (includes lunch both days)

Room 108

The Universal Trail Assessment Process (UTAP) and the High Efficiency Trail Assessment Process (HETAP) are inventory processes that provide objective information about trail conditions (e.g. grade, cross slope, width). The information obtained through an assessment can be used by land managers to enhance the safety and enjoyment for trail users (by providing accurate, objective information about trail conditions). The information obtained can also be used in monitoring environmental impacts on the trail, preparing budgets, developing maintenance and construction plans, and identifying potential access barriers. The two-day workshop combines classroom and practical, hands-on trail assessment experience to ensure that participants have the skills and confidence to conduct assessments. The course will conclude with a written UTAP/HETAP Certification Exam which is the first step towards certification as a Trail Assessment Coordinator.

## Saturday, April 13

### NATURAL SURFACE TRAIL MANAGEMENT 2.0: CHANGE MANAGEMENT FOR A SUSTAINABLE TRAIL PROGRAM

Coordinated by Trail Dynamics and Kay-Linn Enterprises, proud members of the National Trails Training Partnership

8:00 a.m. – 5:00 p.m.

Cost: \$150.00

Room 109

Many trails are still managed under a backcountry, minimal user, and agency-funded paradigm that has long past. While recent improvements for the design of physically sustainable trails are being implemented, managerial and social sustainability best

practices have lagged behind. In many instances, trail managers and advocates cannot yet achieve their goals of physically sustainable trails due to social and managerial conflicts. In order to achieve sustainability on all fronts, agency managers and leading advocates must be willing to change to meet new challenges. This one-day seminar will define the issues and opportunities related to managerial and social sustainability and the relationship to physical sustainability best practices; provide examples of successful change management where agencies and the trails community have come together to create full programmatic sustainability; offer strategies for implementing change on participant's trails.



Photo by Kathleen Fitzpatrick  
CVL Hike Club www.cvlci.com

## Sunday, April 14

### EXPAND YOUR TRAIL CREW LEADER SKILLS

Coordinated by Chinook Associates LLC, a proud member of the National Trails Training Partnership

8:00 a.m. – 11:30 a.m.

Cost: \$50.00

Room 104

Critical to the success of any trail project is the Crew Leader. Participants in this half-day workshop will be introduced to the skills needed to successfully lead a group on a trail project. Topics will include soft skills: safety/risk management, crew/individual motivation, and teaching/leading a diverse group. Technical skills that will be discussed are: tread maintenance, vegetation management, and trail construction.



Photo by Judi Bassett-Snitzer

### WATER TRAILS CAUCUS

Coordinated by American Rivers

Sponsored by Verde River Blue Trail & Walton Family Foundation

10:00 a.m. – 12:00 p.m.

Cost: no fee, pre-registration requested

Room 111

Join the world's leading water trail advocates, managers, planners, and builders at the Water Trails Caucus. The goal of the Caucus is to provide those interested in water trails an opportunity to meet at the Symposium in a setting that is informal, yet focused on water trails. Learn how others are connecting their communities, parks, and land trails to one another through water trails. Enjoy a cup of coffee and grab a snack.

### WEED FREE FEED – FACT OR FICTION?

Coordinated by Two Horse Enterprises

1:00 p.m. – 2:30 p.m.

Cost: \$20.00

Room 105

Many agencies are requiring stock users to feed weed free feeds to stock when riding, packing, and camping on public lands. But are these required weed free feeds really noxious/invasive plants? Does stock graze invasive/noxious plants? And how many invasive/noxious plants can be attributed to stock uses on public lands? In a two-year research project by the California National Park Service and Dominican University, horse manure samples were collected, processed, grown, and classified to determine if the sprouting plants were indeed invasive/noxious plants.





# SCHEDULE SUBJECT TO CHANGE

## CREATING A TRAIL MAINTENANCE MANAGEMENT PROGRAM

Coordinated by Chinook Associates LLC, a proud member of the National Trails Training Partnership

1:00 p.m. – 5:00 p.m.

Cost: \$50.00

Room 107

Millions of dollars annually are devoted to trail development across the country. Fundamental to the sustainability of this investment in a trail system is a Trail Maintenance Management Program. Participants in this workshop will be provided with an overview of the process to create a management program that will include: creating a trail inventory, managing information, and program implementation considerations.

## FEDERAL TRAIL DATA STANDARDS

Coordinated by the National Park Service and the U.S. Forest Service

2:00 p.m. – 3:30 p.m.

Cost: no fee, pre-registration requested

Room 109

Learn what the Federal Trail Data Standards (FTDS) are all about and how to align your trail data for improved consistency, clarity, and communication. This session provides an overview and update on the FTDS — a core set of data attributes geared toward ensuring improved consistency and communication within and among trail data sets. Formally published in 2011 by the Federal Geographic Data Committee, the FTDS are being implemented by the U.S. Forest Service, National Park Service, Bureau of Land Management, and U.S. Fish and Wildlife Service as well as many other state and non-governmental agencies and organizations.



Photo by Kathleen Fitzpatrick  
CVL Hike Club www.cvlci.com

## HORSE TRAILS CAUCUS

Sponsored by American Quarter Horse Association – STEP Program

3:30 p.m. – 5:30 p.m.

Cost: no fee, pre-registration requested

Room 111

Horsemen, land managers, and other recreationists are invited to attend. The goal of the Horse Caucus is to provide an opportunity for those interested in equestrian trails to meet and network at the conference in a forum specifically focused on equine trail use. There will be a moderated session in the first hour to share success stories and issues of concern that need attention on a national level. The second hour will provide social/networking time. Bring information about your trails and equestrian trail group to share with others (business cards, brochures, etc.).

## Tuesday, April 16

### TRAIL FUNDAMENTALS and TMOs: CORNERSTONES OF EFFECTIVE TRAIL MANAGEMENT

Coordinated by the US Forest Service

8:00 a.m. – 12:00 p.m.

Cost: no fee, pre-registration requested

Room 110

During this hands-on training session, learn how to develop Trail Management Objectives (TMOs) and apply five key trail management concepts: Trail Type, Trail Class, Managed Use, Designed Use, and Design Parameters. Originally developed by the U.S. Forest Service, these concepts have been adopted and adapted by other federal and state agencies and partners in the development of trail prescriptions and effective trail management. Target Audience: trail program managers, planners, technicians, advocates, and partners working in trail management, planning, inventory, and development.



Photo by Kathleen Fitzpatrick  
CVL Hike Club www.cvlci.com

## Wednesday, April 17

### NATIONAL TRAILS TRAINING PARTNERSHIP (NTPP) MEETING, OPEN TO THE PUBLIC

Coordinated by American Trails

2:30 p.m. – 6:00 p.m.

Cost: no fee, pre-registration requested

Room 104/105

Join us for an exploration of trails training in America. The NTPP partners invite the participation of agencies, states, communities, and organizations in discussing strategies to make training more available to the nationwide trails community. Topics will include promoting training, identifying needs, training for accessibility and conservation corps, and efforts by states and trail organizations to provide more local training. To learn more about the National Trails Training Partnership, visit [www.TrailsTraining.net](http://www.TrailsTraining.net).

Follow us at  
**Twitter.com/American\_Trails**

and  
**Facebook.com/AmericanTrails.org**

## Things to remember when attending Mobile Workshops

1. Don't forget to pack sunscreen and insect repellent. The average high in Arizona in April is 85 degrees during the day and 55 degrees in the evening. The Sonoran Desert is in full bloom!
2. Workshops are subject to cancellation if a minimum number of participants are not met. If applicable, a full refund will be issued. Refunds will be issued within 30 days after the Symposium.
3. Transportation to and from workshops is provided from the Fort McDowell Radisson and included in workshop fees. Private vehicles will not be permitted as transportation to a mobile workshop, unless otherwise noted.
4. Bottled water will be provided at all outings, but you should bring a means to carry it, such as a fanny pack or backpack. Lunch for Tuesday morning workshops will be a box lunch that you will pick up at the Radisson when you return.
5. Surfaces vary from paved walkways to natural surface trails. Please note difficulty and accessibility descriptions in the workshop narratives and plan accordingly.
6. If you are participating in a road bike, mountain bike, or equestrian event, you are welcome to bring your own helmet. ALL RIDERS ARE REQUIRED TO WEAR A HELMET. Likewise, bikers are welcome to bring your own bike and pedals and kayakers may bring their own trip leader approved personal floatation devices (PFD). For those attendees who are borrowing this equipment (and marked it on your registration form), these will be provided for you at the mobile workshop location.
7. All participants must complete and sign a Release of Liability form, included in your registration packets, for each mobile workshop attended.

MOBILE WORKSHOPS require **separate fees** to cover such costs as rental equipment and entrance fees. To register for a trip and to see if there are any available spots, stop by the Registration Area. Boarding will be 30 minutes prior to departure in the Hotel Shuttle Pick-Up & Drop Off Location. At the time of boarding, be prepared to submit the liability waiver you received in your registration packet. You must submit a signed waiver for each trip that you attend.

**In order to secure your seat, report to the Pick-Up Area no later than 10 minutes prior to departure. Times listed are departure times. The Transportation Pick-Up and Drop Off Location is next to the Exhibit Hall tent (on the west side). Please reference the back cover of this Program for the Transportation Pick-Up & Drop Off Location.**

## Arizona National Scenic Trail Hike Sunday, April 14

**6:00 a.m. – 5:30 p.m.**

**Cost: \$51.00 (includes lunch)**

This 13.3 mile hike will be quick paced (2-3 mph) for fit hikers only. Hikers will be transported in 4-wheel drive vehicles to the Tonto National Forest. The hike will begin at Mills Ridge Trailhead near the top of Four Peaks on the Arizona National Scenic Trail. A member of the Arizona Trail Association will conduct the hike and give perspectives on the management of a National Scenic Trail. The hike will include three half hour breaks. At one break members of the American Conservation Experience will be present to describe the work they are doing on the trail and their participation in the State Parks RTP Trail Maintenance Program. Bring your camera!! Hikers must have day-pack with at least one gallon water bladder and sturdy hiking boots.

**Leaders:** *Arizona Trail Association Stewards*

## Horseback Trail Ride Along the Verde River Sunday, April 14 **and** Tuesday, April 16

**8:00 a.m. – 12:00 p.m.**

**Cost: \$89.00**

Ride down on horseback to and across the scenic Verde River for about 90 minutes. Explore the beauty of the Verde River, and take in panoramic views of the Sonoran Desert's flora and fauna. Return to the Fort McDowell Dinner complex for a presentation on Yavapai Heritage presented by a member of the Yavapai Nation for 90 minutes. Wrap up your ride with a cocktail reception including rides on the famous Tequila Bus. This ride is suitable for beginners.

**Leaders:** *Staff of Fort McDowell Adventures*

# SCHEDULE SUBJECT TO CHANGE

View the map on the back cover of  
Program for Transportation Pick-Up and  
Drop-Off Locations

## The Incredible Edible Desert Hike

Sunday, April 14 **and**

Tuesday, April 16

8:00 a.m. – 12:00 p.m.

Cost: \$34.00

The Sonoran Desert can be harsh and unforgiving, but participants in this workshop will experience the nurturing side of the desert in a unique and unexpected way. On the Scottsdale Sonoran Preserve, attendees will learn about traditional food sources which sustained native people, and will tantalize their taste buds with the flavors of Tohono O'odham Saguaro Syrup, raw prickly pear pads, savory and sweet treats made with local native velvet mesquite meal, prickly pear fruit juice punch, plus a few seasonal surprises. The workshop will include an easy 1.7 mile hike, followed by an opportunity to sample desert delicacies.

**Leader:** Alice Demetra, McDowell Sonoran Conservancy

## Superstition Wilderness Trail Hike

Sunday, April 14

8:00 a.m. – 4:00 p.m.

Cost: \$69.00 (includes lunch)

This quick-paced 8.6 mile hike is for fit hikers only. Hikers will be shuttled to Peralta Trailhead and will travel on Dutchman Trail and return on Bluff Springs Trail within the Superstition Wilderness. Participants will travel through sheer-sided, jagged, volcanic peaks, and boulder-filled canyons covered by Saguaro cacti and bushes. Bring a camera to capture the unforgettable image of Weavers Needle rising on the horizon. The Superstition Mountains are renowned for the legendary Lost Dutchman and continue to draw the attention of prospectors. This congressionally designated Wilderness faces many trail challenges including extensive use, mining, search and rescues, trail maintenance, and motorized vehicle intrusions. Participants will discuss trail management challenges and how volunteers provide tremendous support.

**Leaders:** U.S. Forest Service Wilderness Stewards

## Rock Climbing in the McDowell Mountains

City of Scottsdale McDowell Sonoran Preserve

Sunday, April 14

8:30 a.m. – 2:30 p.m.

Cost: \$152.00 (includes lunch)

Whether you are brand new to the sport or have the climbing skills of a gecko, this workshop will provide the perfect adventure for you. The day will begin with a brief presentation about the Preserve. Then, led by the skilled guides from 360 Adventures, participants will experience the ancient granite of the McDowell Mountains in an up close and personal way. Comfortable clothing that allows a range of motion is recommended. Wear sturdy shoes for the short hike to the climbing areas. There are two difficulty levels: beginner and advanced. Location: City of Scottsdale McDowell Sonoran Preserve – Tom's Thumb Trailhead.

**Leaders:** Staff from 360 Adventures

## Goldmine Trail / Hieroglyphic Trail Hike (Moderate)

Sunday, April 14

8:00 a.m. – 4:00 p.m.

Cost: \$69.00 (includes lunch)

This will be a 7-mile hike of moderate difficulty hosted by the Superstition Area Land Trust (SALT) and Tonto National Forest. It is actually two hikes in one and includes a picnic lunch.

The Hieroglyphic Trail is a 1.1-mile wilderness hike up a gentle slope to a site with extensive Native American petroglyphs. Some boulder hopping may be necessary to experience these. A Forest Service host will provide commentary on the petroglyphs and natural resources of the area. Bring your camera!

The Goldmine Trail is a 5-mile hike with some elevation changes, but no net gain or loss. Stewards from the SALT will host this portion of the hike and provide information about land conservation efforts in Arizona and the challenges in building and maintaining the trail and trailheads. This trail features the beauty of the Sonoran Desert with numerous large saguaro cacti, views of the southern slopes of the Superstition Mountains, and vast panoramas of the valley. Wildflowers and blooming cacti should be abundant. Location: Apache Junction/Tonto National Forest.

**Leaders:** SALT Stewards and Tonto National Forest Archaeologist

## Bulldog OHV Management Jeep Tour

Sunday, April 14

9:00 a.m. – 2:00 p.m.

Cost: \$136.00

This will be a slow paced Jeep tour in Bulldog on the Mesa Ranger District of the Tonto National Forest. Bulldog is a permitted motorized recreation use area that offers spectacular views of the Goldfield and Usery Mountains. This workshop displays four-wheel drive opportunities in Arizona and allows for review of topics including OHV permit systems and challenges, wildlife closures, how volunteer and permitted outfitter guides work together to help manage the area, and the telling of Lost Dutchman goldmine stories! Apache Trail Tours will host the ride. The Forest Service will provide commentary and provide an overview of the management techniques being implemented. Participants will have free time to purchase lunch and to tour the Goldfield Ghost Town which offers unique activities, eateries, and western shops.

**Leaders:** Apache Trail Tours and U.S. Forest Service



Courtesy Mesa Convention and Visitors Bureau

## Desert Belle Boat Tour Sunday, April 14

12:00 p.m. – 2:30 p.m.

Cost: \$51.00

The Desert Belle Tour Boat is a 143 passenger boat that is handicap accessible. The boat has two levels: upper is open air and lower level is climate controlled. Narrated nature cruises are 90 minutes in length. Passengers will be educated on the rich history, geology, geography, desert landscape, and exotic wildlife that is native to Saguaro Lake, located in Tonto National Forest.

**Leader:** Suzanne Hagberg, captain of the Desert Belle

## Rafting the Lower Salt River Sunday, April 14

12:30 p.m. – 4:30 p.m.

Cost: \$89.00

The river adventures are conducted on both the Lower Salt and Lower Verde Rivers. The flow on these rivers is regulated by the Salt River Project, one of the local utility providers, to manage for a variety of demands, including flood control, irrigation and domestic water supply, ecosystem management, and recreation. The amount of water flowing in the waterways fluctuates seasonally and often not in relation to local weather conditions. Participants will learn about the water management strategies of the Salt River Project and experience the beauty of the Salt and Verde Rivers. Each raft will have a professional safety certified guide. Water proof shoes/sandals are required.

**Leader:** Arizona Outback Adventures

## Kayaking Tour on the Lower Salt River Cost: \$99.00

Sunday, April 14

12:30 p.m. – 4:30 p.m.

and

Tuesday, April 16

8:00 a.m. – 12:00 p.m.

A two person inflatable kayak is an impressively stable vessel on the scenic, Class I rapids on the Lower Salt River. This is a perfect choice for people who would like a little more time together in the context of a larger group, or for a guest to help a less experienced companion enjoy an adventure activity. The Lower Salt River corridor is the home to over three quarters of all the plant and animal species in the southwest, and our knowledgeable guides will share their insights into this amazing environment; they will also be providing instruction, encouragement, and safety supervision for tour participants. Water proof shoes/sandals are required. Guides are certified for all levels of professional safety.

**Leader:** Arizona Outback Adventures



Photo by Arizona Outback Adventures

## Tour Scottsdale's Award-Winning Public Art, Indian Bend Wash Path, and Downtown

Tuesday, April 16

8:00 a.m. – 12:00 p.m.

Cost: \$63.00

Art is for the soul. Cycling is for the body. Exercise your brain and your heart with an easy bike tour of some of Scottsdale's award-winning public art. Take the Indian Bend Wash Path through a series of parks that line one of the most innovative flood control projects in the nation. Recognized by the League of American Bicyclists as a Gold Level Bicycle Friendly Community, Scottsdale continues to expand the bikeway network with on-street bike lanes, paved paths, and unpaved trails. Many of the city's 110 grade-separated crossings and pedestrian bridges were designed by artists, including the Soleri Bridge and Plaza created by visionary architect Paulo Soleri. Learn how the City of Scottsdale integrates public art into the transportation program including the Percent for Art contribution from the Capital Improvement Program, Cycle the Arts annual community bike ride, and self-guided bike tour of downtown public art. This flat, ten-mile ride will stimulate the mind, rejuvenate the body, and awaken the creative spirit. Bikes provided by: Arizona Outback Adventures. Location: Scottsdale Museum of Contemporary Art.

**Leaders:** Reed Kempton, Principal Transportation Planner; Greg Davies, Senior Transportation Planner; Susan Conklu, Transportation Planner



Photo by City of Scottsdale

## Tempe Rio Salado Town Lake, Downtown Mill Avenue, Arizona State University

Tuesday, April 16

8:00 a.m. – 12:00 p.m.

Cost: \$57.00

Join City of Tempe planners on a bike ride through historic Downtown Tempe and surrounding Town Lake districts for a fun and informative adventure. Starting at Tempe's LEED Certified Transportation Center, where multiple forms of transportation bring residents from all over the valley, travel south down College Avenue and cross through Arizona State University's Tempe campus. See what a world class university offers, as you experience a mix of building styles and ASU's Arboretum. Reach the junction of Apache Blvd and Mill Avenue and learn the surprising history behind Frank Lloyd Wright's Gammage Auditorium. Continue along Mill Avenue for a glimpse at Tempe's walkable urban environment. Learn the significance of the historic Mill District as you ride under the cool shade trees. Enter Tempe Beach Park and see firsthand Arizona's number one visitor destination. Ride along the lake, watch for the rail or cars as they pass overhead, and stop at the award winning Tempe Center for the Arts. Finish back at the Transportation Center with a new look on Tempe's historic and modern mix of urban lifestyles.

**Leader:** Eric Iwerson, City of Tempe



# SCHEDULE SUBJECT TO CHANGE

## Guided Mountain Bike Ride

Tuesday, April 16

8:00 a.m. – 12:00 p.m.

Cost: \$109.00

Mountain biking provides riders of all levels an invigorating Sonoran Desert experience! At the McDowell Mountain Regional Park, enjoy 70-mile views that span the desert as you cruise single-track trails atop a high performance bike. In addition to sharpening your mountain biking skills, this adventure also allows you to learn about the fascinating flora and fauna, geology and history of the richly diverse Sonoran Desert. Riders will need to wear close toed shoes.

**Leader:** Arizona Outback Adventures

## Introduction to the Sonoran Desert

(Choose 2 of 3 Workshops)

Tuesday, April 16

8:00 a.m. – 12:00 p.m.

Cost: \$39.00

Each workshop is 90 minutes long. Participants will be asked to choose from two options:

1. Desert Birding
2. Eco Tour (includes multiple topics on Sonoran Desert flora and fauna)
3. Hiking in the Sonoran Desert (unique challenges that desert hikers face)

Workshops will be located in the lower Verde River basin. The 21,099-acre park is a desert jewel in the northeast Valley. Elevations in the park rise to 3,000 feet along the western boundary at the base of the McDowell Mountains. Visitors enjoy over 50 miles of multiuse trails, and spectacular views of the surrounding mountain ranges. The hiking component of these workshops is on easy trails and will vary between 1-3 miles on decomposed granite at a slow pace with frequent stops.

**Leaders:** Maricopa County, Parks and Recreation Department Interpretive Rangers Amy Burnett, Adam Martel, and Brennan Basler



Photo by Kathleen Fitzpatrick - CVL Hike Club www.cvl.com



Photo by Kathleen Fitzpatrick  
CVL Hike Club www.cvl.com

## Petroglyph Hike

Tuesday, April 16

8:00 a.m. – 12:00 p.m.

Cost: \$39.00

This workshop will take participants along a 1.9 mile hike through the rolling hills at the base of the McDowell Mountains. This hike is moderate over decomposed granite and undulating terrain. Arriving at the historic Dixie Mine, participants will see petroglyphs which are archaic and date to the Hohokam period. Docent Shelley Rasmussen will lead this workshop and describe the Hohokam period and ancient habitation of the Verde Valley. Management strategies will be discussed along the trail.

**Leader:** McDowell Mountain Regional Park staff

## Sycamore OHV Management UTV Ride

Tuesday, April 16

8:00 a.m. – 12:00 p.m.

Cost: \$136.00

This will be a slow to moderate paced UTV ride in the Sycamore area from the Sugarloaf access on the Mesa Ranger District of the Tonto National Forest. The Tonto National Forest is the most highly visited National Forest in the nation for off-highway vehicle use. The motorized routes in Sycamore wind through Sonoran Desert landscape with trails that cross rocky creek beds, deep sand washes, ride-top trails, and allow for views of steep hill climbs. Desert Dog, a tour guide group under Tonto National Forest permit will host the ride. TRAL representatives and the Forest Service will provide commentary and provide an overview of the management techniques being implemented and how volunteer organizations such as TRAL help to fill many gaps. Participants will not be required to have UTV riding experience. Participants must wear over the ankle boots, long pants, and a long sleeved shirt. Sunglasses can provide eye protection and goggles, helmets, and gloves will be provided.

**Leader:** Desert Dog

Follow us at  
**Twitter.com/American\_Trails**

and  
**Facebook.com/AmericanTrails.org**

View Presenter bios online at  
[www.AmericanTrails.org/2013](http://www.AmericanTrails.org/2013)

## A new option

A major innovation for this year's Symposium is a new format option called Core Tracks. The Program Committee conducted an online survey to better understand what Symposium participants want to learn. **You spoke!** (We received over 600 responses.) **We listened!** Ten primary topic areas rose to the top. (see topic list on page 10) Core Tracks are designed to allow presenters to explore subjects in greater depth than is possible in a 75 minute Concurrent Session. This will allow ample time for in-depth presentations, discussion, examples, and practice, and some sessions include field work.

**Registration is only required for OFFSITE Core Tracks taking place the morning of Tuesday, April 16 (if not already FULL).**

**PLEASE NOTE:** Some of the Core Tracks have a Part 1 and a Part 2, as noted on the Schedule. Some sessions are held in the classroom and some are offsite. It is highly encouraged that you attend both of these if you plan to attend one on the same subject.



Courtesy Mesa Convention and Visitors Bureau

## MONDAY, APRIL 15

8:15 - 11:15 a.m.

### Fact Not Fiction: Measuring Trail Impacts for Better Resource Management

Room 102

This session will help participants develop quantitative methods for assessing the impact of trail use for Resource Management Plans (RMPs). There also will be practice exercises for participants to begin applying these general concepts to their own circumstances.

**Speakers:** Dan Gruber, Volunteer Conservation Steward, McDowell Sonoran Conservancy, Phoenix, AZ; Chelsey Hull, Plant Biology Major (ASU) and Intern, McDowell Sonoran Conservancy Field Institute, Phoenix, AZ; Melanie Tluczek, Research Coordinator, McDowell Sonoran Conservancy Field Institute, Phoenix, AZ

### Hikers, Mountain Bikers, and Equestrians - Oh My!

Room 107

This presentation will detail how the Arizona Trail Association (ATA) has addressed the special needs of trail users other than hikers, such as mountain bikers, equestrians, trail runners, handcyclists, and other non-motorized outdoor recreationalists. Trails aren't just for hiking anymore. We will also hear from Patrick Kell of the International Mountain Biking Association, who has worked as an advocate for the mountain bike community around the world, collaborating with hikers, equestrians, land managers, and other trail stakeholders to preserve the areas we all use (and love). He is skilled at helping people understand the important role that mountain bikers play in trail protection and development, and helps dispel common misconceptions about mountain biking, its community, and its impact.

**Speakers:** Mark Flint, President, Southwest Trail Solutions, Tucson, AZ; Jan Hancock, Principal Designer and Consultant, Hancock Equestrian Resources, Phoenix, AZ; Patrick Kell, Southwest Regional Director, International Mountain Biking Association, Boulder, CO; Matthew Nelson, Executive Director, Arizona Trail Association, Phoenix, AZ

### 3D Collaborative Process – You, Me, and We: Individual Competencies and Intentional Planning Strategies for Clear Partner Agreements

Room 108

This session is a compressed, introductory version of a 3-day training developed by NPS-Rivers, Trails, and Conservation Assistance program staff to improve collaborative planning methods, processes, and outcomes for anyone who works with conservation and/or natural resource management issues. Real world examples and interactive exercises will reinforce the lessons for this session.

**Speakers:** Cate Bradley, Community Planner – Rivers, Trails, and Conservation Assistance Program, National Park Service, Tucson, AZ; Joy Lujan, Community Planner – Rivers, Trails, and Conservation Assistance Program, National Park Service, Denver, CO

### Water Trails: Connecting People, Enhancing Communities ~ PART 1

Room 109

(Part 2 takes place Tuesday afternoon and participants are encouraged to attend both sessions)

This program will explore the latest developments and most pressing issues in the field of water trails. This includes state-of-the-art technology, mapping, and services; innovative strategies for improving water-based recreation, economic development, and conservation; and new national initiatives that aid in the development of water trails.

**Speakers:** Jean Akers, Chief Park Planner, Vancouver-Clark Parks and Recreation, Vancouver, WA; Linda Craghead, Assistant Secretary, Kansas Department of Wildlife, Parks, and Tourism, Topeka, KS; Lelia Mellen, Water Trail National Leader, Rivers Trails and Conservation Assistance Program, National Park Service, Woodstock, VT; Jamie Mierau, Director – River Protection, American Rivers, Washington, D.C.; Walter Opuszynski, Trail Director, Northern Forest Canoe Trail, Waitsfield, VT; Risa Shimoda, Executive Director, River Management Society, Takoma Park, MD; Kristen Sykes, Director of Conservation Strategies, Appalachian Mountain Club, Boston, MA; Staci Williams, Waccamaw River Blue Trail Organizer, American Rivers, Conway, SC; Doug Von Gausig, Mayor, Clarkdale, AZ



Photo by Kathleen Fitzpatrick  
CVL Hike Club [www.cvlci.com](http://www.cvlci.com)

# SCHEDULE SUBJECT TO CHANGE

CEUs are available!  
Go to Registration Area to purchase and  
view list of eligible sessions. \$25 flat rate.

## MONDAY, APRIL 15

1:45 – 4:45 p.m.

### Fire On The Mountain: Responding to, Recovering from, and Preventing the Devastating Effects of Fire on Our Trails ~ PART 1

Room 106

(Part 2 is an offsite session on Tuesday morning and participants are encouraged to attend both sessions)

This presentation will detail how the Arizona Trail Association (ATA) is dealing with catastrophic fires along the Arizona National Scenic Trail; how communities, land managers, and volunteers are working together to prevent loss of resources; and how future impacts of fire can be minimized by progressive preventive measures.

**Speakers:** Mike Brandt, Project Manager, Pine/Strawberry Fuel Reduction, Inc.; Dr. Mary Lata, Fire Ecologist, Four Forest Restoration Initiative, Flagstaff, AZ; Brian Poturalski, Recreation and Wilderness Staff Officer, Coconino National Forest, Flagstaff, AZ; Matt Roberts, Director, American Conservation Experience, Flagstaff, AZ

### Building Trail Towns: Encouraging Involvement and Building Capacity Within Gateway Communities to Trail Systems ~ PART 1

Room 108

(Part 2 is an offsite session on Tuesday morning and participants are encouraged to attend both sessions)

Small towns located near trailheads can be as important as the trails themselves. Working with "gateway communities" to become great trail towns is a vital process in trail development and sustainability. This presentation will detail how the Arizona Trail Association (ATA) has conducted outreach and community development within the 23 communities near the Arizona National Scenic Trail (AZT). The session highlights the small mining town of Superior, a "model gateway community" that has embraced trail users, accommodated their needs, organized trail events, and built a six-mile interpretive trail, directly linking the AZT to the community. A trail town model used in Pennsylvania and Maryland will be shared as well.

**Speakers:** Mila Besich-Lira, Owner, Miracle Executive Services; Amy Camp, Private Consultant and Regional Trails Manager, Pennsylvania Environmental Council, Pittsburgh, PA; Sirena Dufault, Arizona Trail Gateway Community Liaison, Arizona Trail Association, Phoenix AZ

### Leading Quality Trails: Best of Europe

Room 107

The European Rambling Association has recently adopted a model for distinguishing amongst its tens of thousands of hiking trails in its 30 member countries by offering a transparent system to improve and promote sustainable walking tourism through a certification program. This new program is based upon the existing system used over the past ten years by the Wanderbares Deutschland, which currently certifies 85 walking routes as "Leading Trails." This session will introduce participants to the Leading Quality Trails - Best of Europe System. Attendees will learn what criteria have been selected by the European Rambling Association as standards for a sustainable and vibrant walking tourism sector.

**Speaker:** Michael Haynes, Director, TransActive Solutions, Ottawa, Canada

### Conversations on OHV Management: Experiences from Alaska and a Panel Discussion on NOHVCC's New Publication, "Creating Great OHV Trails"

Room 102

Multi-use trails are great recreation opportunities for a diversity of users that enjoy sharing trails. In this session, we will discuss how to create and manage great trails for off-highway vehicle (OHV) and nonmotorized recreation. Many public lands around the world are managed for multiple uses and our challenge is to create a great recreation experience for as many trail users as possible. We will discuss the challenges of managing OHV trails in Alaska and review a U.S. Forest Service publication that covers sustainable trail design concepts and a 10-element framework for OHV trails management. The session includes an introduction on trail condition assessments, evaluation of management options, trail prescriptions, and trail hardening techniques. We will discuss a new publication that is in the works, *Great OHV Trails – A Guide to OHV Trail Design, Construction & Management*, being developed by the National Off-Highway Vehicle Conservation Council (NOHVCC) in cooperation with OHV managers from across the U.S. and Canada. Your participation during the session will directly contribute to the development of the guide. We conclude with a panel discussion on OHV recreation and multi-use trails.

**Speakers and Panelists:** Kevin Meyer, Regional Trails Specialist (retired), National Park Service, Anchorage, AK; Drew Stoll, Outdoor Recreation Planner/Managing Editor, NOHVCC/Great Outdoors Consultants, Fort Collins, CO; Jim Keeler, Travel Management Coordinator (Retired), USDI, Bureau of Land Management; Dan Kleen, President, NOHVCC, Pocahontas, IA; Karen Umphress, IT and Project Manager, NOHVCC, Jordan, MN; Jason Stinchfield, Natural Resource Specialist, U.S. Forest Service, Escalante, UT



Photo by Robert Baldwin  
Arizona State Parks

## TUESDAY, APRIL 16

7:00 a.m. – 1:00 p.m.

### Building Trail Towns: Encouraging Involvement and Building Capacity Within Gateway Communities to Trail Systems ~ PART 2

**OFFSITE – Pre-registration required**

(Part 1 is a classroom session on Monday morning and participants are encouraged to attend both sessions)

#### BOX LUNCH INCLUDED

Small towns located near trailheads can be as important as the trails themselves. Working with "gateway communities" to become great trail towns is a vital process in trail development and sustainability. This presentation will detail how the Arizona Trail Association (ATA) has conducted outreach and community development within the 23 communities near the Arizona National Scenic Trail (AZT). The session will highlight the small mining town of Superior, a "model gateway community" that has embraced trail users, accommodated their needs, organized trail events, and built a 6-mile interpretive trail, directly linking the AZT to the community. A trail town model used in Pennsylvania and Maryland will be shared as well.

**Speakers:** Mila Besich-Lira, Owner, Miracle Executive Services; Amy Camp, Private Consultant and Regional Trails Manager, Pennsylvania Environmental Council, Pittsburgh, PA; Sirena Dufault, Arizona Trail Gateway Community Liaison, Arizona Trail Association, Phoenix AZ



## Fire On The Mountain: Responding to, Recovering from, and Preventing the Devastating Effects of Fire on Our Trails ~ PART 2

**OFFSITE – Pre-registration required**

(Part 1 is a classroom session on Monday morning and participants are encouraged to attend both sessions)

### BOX LUNCH INCLUDED

This presentation will detail how the Arizona Trail Association (ATA) is dealing with catastrophic fires along the Arizona National Scenic Trail; how communities, land managers, and volunteers are working together to prevent loss of resources; and how future impacts of fire can be minimized by progressive preventive measures.

**Speakers:** Mike Brandt, Project Manager, Pine/Strawberry Fuel Reduction, Inc.; Dr. Mary Lata, Fire Ecologist, Four Forest Restoration Initiative, Flagstaff, AZ; Brian Poturalski, Recreation and Wilderness Staff Officer, Coconino National Forest, Flagstaff, AZ; Matt Roberts, Director, American Conservation Experience, Flagstaff, AZ

## TUESDAY, APRIL 16

8:00 a.m. – 12:00 p.m.

## Utilizing GPS and GIS Technology to Develop Effective Trail Management Strategies ~ PART 1

**OFFSITE – Pre-registration required**

(Part 2 is a classroom session on Tuesday afternoon and participants are encouraged to attend both sessions)

### FULL

This workshop introduces the different types of mapping techniques that can be used to record information about your trail system. We will cover the pros and cons of recreational and professional GPS hardware and discuss options for viewing and creating maps using Pathfinder Office, ArcGIS, and Google Earth. The workshop's offsite portion will include a hands-on exercise of tracking down an "injured victim" on a trail. Participants will learn how to create data dictionaries and use various data sources to create trail maps.

**Speakers:** Marcie Diaz, Greenspace Planner, Gwinnett County Parks and Recreation, Lawrenceville, GA; Dr. Mark Patterson, Conservation Parks Operations Coordinator, Gwinnett County Parks and Recreation, Lawrenceville, GA

Follow us at  
**Twitter.com/American\_Trails**

and  
**Facebook.com/AmericanTrails.org**

## Designing Trails That Connect Children to School, Parks, and Fun

**OFFSITE – Pre-registration required**

In 2010, American Trails and PlayCore formed a partnership to develop innovative ideas to encourage the use of pathways by children and families. The result was a publication, Pathways for Play, and a research project focused on the issue. The results will be reported in this session, concentrating on approaches to planning and design for urban pathways for children.

Participants will be led through the design process from beginning to end. The opening phase will cover the scientific evidence related to children's play, children and nature, and children's mobility. Results of our original research on children's use of pathways and greenways will be shared. Using a local example of an existing neighborhood pathway in nearby Scottsdale - connecting to an elementary school and neighborhood park - we will introduce best practice evaluation criteria. We will drive to the site, walk the pathway as a group, observe pathway use, apply the criteria and evaluate the components. We will discuss perceived success, potential additional challenges and opportunities, and ideas for infusing additional play value into the pathway to motivate more use by children and families.

**Speakers:** Adina Cox, Research Assistant, Natural Learning Initiative, North Carolina State University, Raleigh, NC; Lisa Moore, Vice President, PlayCore, Chattanooga, TN; Robin Moore, Director, Natural Learning Initiative, North Carolina State University, Raleigh, NC

## TUESDAY, APRIL 16

1:15 – 4:15 p.m.

## Developing the Trail Plan that Pays: Solutions-Based Trail Assessment and Planning Room 107

A Solutions-Based Trail Assessment depends upon a detailed understanding of the art and science of developing sustainable trails, and 1) identifies core issues that need to be rectified, 2) provides a critical path for mitigating impacts, and 3) justifies the needs/outcomes for funds to realize physical, social, and managerial sustainability.

Three of the country's leading practitioners of a solutions-based approach to trail assessment and redevelopment will provide an overview of cutting edge GIS tools, tested field assessment and public outreach procedures, and strategic plan development that has facilitated millions of dollars in real trail improvements. Example projects completed in the last five years will be outlined where these tools have been employed successfully on federal, state, and local properties with non-motorized, motorized, shared-use, and single-use trail systems.

**Speakers:** Woody Keen, Principal, Trail Wisdom, Cedar Mountain, NC; Scott Linnenburger, Principal, Kay-Linn Enterprises LLC, Boulder, CO; Dr. Jeremy Wimpey, Owner, Applied Trails Research LLC, State College, PA



Photo from Inside the Outdoors School  
Orange County Department of Education



# SCHEDULE SUBJECT TO CHANGE

CEUs are available!  
Go to Registration Area to purchase and  
view list of eligible sessions. \$25 flat rate.

## Utilizing GPS and GIS Technology to Develop Effective Trail Management Strategies ~ PART 2

Room 102

(Part 1 is an offsite session on Tuesday morning and participants are encouraged to attend both sessions)

### FULL

This workshop introduces the different types of mapping techniques that can be used to record information about your trail system. We will cover the pros and cons of recreational and professional GPS hardware and discuss options for viewing and creating maps using Pathfinder Office, ArcGIS, and Google Earth. The workshop's offsite portion will include a hands-on exercise of tracking down an "injured victim" on a trail. Participants will learn how to create data dictionaries and use various data sources to create trail maps.

**Speakers:** Marcie Diaz, Greenspace Planner, Gwinnett County Parks and Recreation, Lawrenceville, GA; Dr. Mark Patterson, Conservation Parks Operations Coordinator, Gwinnett County Parks and Recreation, Lawrenceville, GA

## TUESDAY, APRIL 16

1:15 – 5:15 p.m.

## Water Trails: Connecting People, Enhancing Communities ~ PART 2

Room 110

(Part 1 takes place Monday morning and participants are encouraged to attend both sessions)

This program will explore the latest developments and most pressing issues in the field of water trails. This includes state-of-the-art technology, mapping, and services; innovative strategies for improving water-based recreation, economic development, and conservation; and new national initiatives that aid in the development of water trails.

**Speakers:** Jean Akers, Chief Park Planner, Vancouver-Clark Parks and Recreation, Vancouver, WA; Linda Craghead, Assistant Secretary, Kansas Department of Wildlife, Parks and Tourism, Topeka, KS; Lelia Mellen, Water Trail National Leader, Rivers Trails and Conservation Assistance Program, National Park Service, Woodstock, VT; Jamie Mierau, Director – River Protection, American Rivers, Washington, D.C.; Walter Opuszynski, Trail Director, Northern Forest Canoe Trail, Waitsfield, VT; Risa Shimoda, Executive Director, River Management Society, Takoma Park, MD; Kristen Sykes, Director of Conservation Strategies, Appalachian Mountain Club, Boston, MA; Staci Williams, Waccamaw River Blue Trail Organizer, American Rivers, Conway, SC; Doug Von Gausig, Mayor, Clarkdale, AZ

## Equestrian Trails: Visioning the Future

Room 112

The future of equestrian trails hangs in balance as 21st century funding for new trails, trail maintenance, and trail access is being challenged. This educational program will address these issues head-on and provide new and encouraging perspectives on how to meet these challenges effectively. Program will include an

interactive outdoor horse and horse trailer parking and staging demonstration and a participants' roundtable workshop to define equestrian planning and design guidelines for trails, trailheads, and campgrounds.

**Speakers:** Jan Hancock, Principal, Hancock Resources LLC, Phoenix, AZ; Therese Kline, PE, Chairwoman, Michigan Horse Council, Morrice, MI; Yvette Rollins, Vice Chair, Back Country Horsemen of America, Springville, IN

## Draft Final Rule – Accessibility Guidelines for Trails, Camping and Picnic Facilities, Viewing Areas, and Beach Access Routes: What Works, Best Practices, and Accessible Trail Surfaces

Room 109

This session will begin with a review of the Draft Final Accessibility Guidelines for Outdoor Developed Areas by Bill Botten, Accessibility Specialist at the Access Board. After the review and discussion of the guidelines, Janet Zeller, National Accessibility Program Manager for the U.S. Forest Service, will provide an introduction to the USFS Accessibility Guidebook on Outdoor Recreation and Trails guidelines. These guidelines are available online and are a user-friendly resource currently utilized by U.S. Forest Service employees. Janet will present on the successes and struggles of implementing the guidelines, as exhibited through U.S. Forest Service examples. The presentation will include an introduction to the user friendly resource the U.S. Forest Service uses when working with said accessibility guidelines. The session will conclude with a presentation on accessible trail surfaces and a discussion of the findings from the National Trails Surface research project by Nikki Montembeault, Accessibility Specialist with the National Center on Accessibility.

**Speakers:** Bill Botten, Accessibility Specialist, U.S. Access Board, Washington, D.C.; Nikki Montembeault, Accessibility Specialist, National Center on Accessibility, Bloomington, IN; Janet Zeller, National Accessibility Program Manager, U.S. Forest Service, Washington, D.C.

## WEDNESDAY, APRIL 17

8:30 – 11:30 a.m.

## Agency/Organization Collaboration: Creating an Enduring Love Fest

Room 108

"We love working with you guys!" This session will provide participants with all the tools and information needed to transform their agency/organization partnerships into a mutual

admiration love fest with legions of happy volunteers and much improved trails. Covering everything from project identification and scope to the "nitty gritty" of safety and liability, this session will give attendees a comprehensive platform for developing and sustaining partnerships in their own communities.

**Speakers:** Cathy Moyer, Executive Director, Volunteers for Outdoor California (V-O-Cal), Redwood City, CA; Jim Townsend, Manager of Trails Development Programs, East Bay Regional Park District, Oakland, CA



Photo by Lynn Moring



Photo by Kathleen Fitzpatrick  
CVL Hike Club www.cvlci.com

View Presenter bios online at  
[www.AmericanTrails.org/2013](http://www.AmericanTrails.org/2013)

## Trails Lead Everywhere

We invite you to choose from 50 educational sessions keeping with our theme, "Trails Lead Everywhere" celebrating the remarkable role of trails worldwide. Throughout time, they have united and guided humans across the globe. Trails were the foundation of our communication network and continue to be an essential component of our personal and professional experiences and relationships.

As one of our greatest assets, trails enable us to explore, travel, and savor the world's natural wonders, from the highest mountains to the deepest canyons and all the vast open spaces in between. They are the best way to see nature's hidden treasures, the cleanest way to commute, and the easiest way to encourage kids to adopt healthy lifestyles.

Trails are the ribbons that connect us, lead us, and expand our horizons.

**All concurrent sessions are 75 minutes in length except for the Tuesday, 1:15 p.m. sessions which are two hours.**

Consult the Radisson Conference Center maps on the back of the Program for room locations.

## SUNDAY, APRIL 14

3:00 - 4:45 p.m.

### Thinking Beyond Borders: Creation of the International Appalachian Trail

Wassaja 110

On April 22, 1994 – Earth Day – Governor Joseph Brennan proposed the establishment of a trail to connect the three highest points of Maine, New Brunswick and Quebec. This original vision aimed to connect people of a common landscape and culture, and it has since grown significantly beyond a hiking path to link Katahdin, Mt. Carleton and Mt. Jacques Cartier. Phase I was completed in 2000. The same impulse that inspired Benton MacKaye to propose the creation of the Appalachian Trail in 1921 – rural economic development and the celebration of open space and a shared mountain landscape – has propelled the IAT to all of Atlantic Canada (Phase II) and across the broad expanse of the North Atlantic to Greenland, Iceland, the Farøe Islands, Sweden, Norway, Denmark, the Netherlands, England, Scotland, Wales, Ireland, Northern Ireland, France and Spain – with Portugal and Morocco pending (Phase III). This presentation will chronicle the growth of the IAT with particular attention to diversity of organization, use of technology and funding, as well as the singular, unwavering attention to a bit of geologic history to galvanize a 20,000-mile trail network that will soon ring the North Atlantic.

**Speaker:** Don Hudson, Co-founder and President, Maine Chapter International Appalachian Trail

## MONDAY, APRIL 15

8:15 – 9:30 a.m.

### Trail Innovations in the Desert Southwest: "Next-Generation" Urban Trails in Tucson, and Restoration of One of America's "Most Endangered" Rivers in Santa Fe

Wassaja 105

If you think the desert climate of the American Southwest is inhospitable to outdoor recreation and trail use, these two highly successful projects in Tucson, AZ and Santa Fe, NM should help refute that assumption. In Tucson, the Pima Association of Governments, in partnership with the University of Arizona and other organizations/agencies, recently completed a pedestrian, bicycle, and trails master plan to enhance non-motorized links to and through the U of A campus. Extremely high community expectations demanded that this effort be results-driven, have an effective community and stakeholder engagement strategy, include policies to clearly guide on-the-ground implementation, and provide a clearly-defined roadmap for putting the plan into action. The resulting effort includes robust infrastructure and programmatic elements, several of which are now under construction.

In Santa Fe, public desire for a trail along the Santa Fe River led to a concurrent restoration project of the river itself. The river seemed a logical location for development of a trail to meet that desire. Due to the sensitive nature of the corridor, the environmental bent of the mayor, and the strong opinions of many of the neighbors, an extensive public involvement process drove the design work. Special features of the trail included a "greenwall" reinforced, vegetated, earthen retaining wall system to support the trail, as well as stabilization of the adjacent river bed using bioengineering techniques that were essentially untried on a project of this magnitude. To date, the process has taken more than six years to develop approximately half of the original "Pilot Project," with future phases in progress at the design stage.

**Speakers:** Robert Oberdorfer, Senior Landscape Architect, Weston Solutions Inc.; Rory Renfro, Associate, Alta Planning and Design

### Federal Transportation Funds For Trails

Wassaja 110

The Federal Highway Administration's transportation programs can help create safe, accessible, attractive, and environmentally-sensitive communities where people want to live, work, and recreate. These programs can integrate transportation and recreation. This session will explain new Federal surface transportation legislation and how it affects trail programs and funding for trail projects. Attendees will learn how to apply for Federal-aid transportation funds and learn what works and what doesn't.

**Speaker:** Christopher Douwes, Trails and Enhancements Program Manager, Federal Highway Administration

# SCHEDULE SUBJECT TO CHANGE

CEUs are available!  
Go to Registration Area to purchase and  
view list of eligible sessions. \$25 flat rate.

## Dots and Dashes: Connecting People to Places with Trails and Paths

Wassaja 106

This presentation will discuss how to incorporate shared use unpaved trail and paved path systems into the overall city transportation infrastructure and planning program. Some of the challenges include differences in social and environmental geography, with different physical terrain, population densities, and mobility needs. The presentation will discuss how to utilize policy and programming, as well as identify funding sources, to successfully integrate non-motorized transportation into a larger transportation master plan framework.

**Speakers:** Susan Conklu, Transportation Planner, City of Scottsdale; Scott Hamilton, Senior Transportation Planner, City of Scottsdale

## Art of Sustainable Trail Management ~ Examples from Across the Globe

Wassaja 104

"The Art of Sustainable Trail Management" will teach attendees the basics behind developing and managing natural surface, shared-use trail systems. In 25 years, Tony has passionately led crews in sculpting over 850 kilometers of shared-use and purpose-built trails for mountain bicyclists of all ages and abilities around the world. His session will include examples from his work in China, Australia, Hong Kong, and the Philippines. Topics ranging from bench cut construction to rolling contour design will be covered. This session is geared primarily towards beginning and intermediate level trailbuilders, including volunteers, agency staff, and professional trail crews.

**Speaker:** Tony Boone, Owner, Tony Boone Trails, LLC

## Pathways For Play: Infusing Play Into Trail Networks To Engage Children And Families

Wassaja 103

Discover how to create innovative trails that are FUN and enjoyable for intergenerational users! Explore best practice guidelines and supportive research for designing playful pathways that infuse play throughout the trail experience. Case study examples will demonstrate how to attract children and families, extend play value, promote physical activity, provide environmental learning, and engage users with nature along trails.

**Speakers:** Lisa Moore, VP of Corporate Strategic Services, PlayCore; Robin Moore, Professor of Landscape Architecture, Director of Natural Learning Initiative, North Carolina State University; Adina Cox, Research Assistant at the Natural Learning Initiative, North Carolina State University

Follow us at  
[Twitter.com/American\\_Trails](https://twitter.com/American_Trails)

and  
[Facebook.com/AmericanTrails.org](https://Facebook.com/AmericanTrails.org)

## MONDAY, APRIL 15

10:00 – 11:15 a.m.

### The South Platte River Greenway ~ Building on a Legacy

Wassaja 103

To share more than 35 years of combined experience on the planning, design and construction of the South Platte River Greenway in Colorado.

**Speakers:** John M. Pfau, P.E. Professional Engineering Consultant; Jeff Shoemaker, Executive Director, The Greenway Foundation; H. William Woodcock, ASLA, Owner of Landscape Solutions 3, Inc.; Bill Neumann, ASLA, Principal DHM Design Corporation

### Trails Saved My Life...

Wassaja 104

Trails have saved all our lives – we just don't realize it – and this lack of understanding is slowly killing our trails and us in the process. As advocates, planners, and communities, we need to raise the awareness of trails and the broadest, most essential roles they play in our daily lives. We need to change the face of trails and align their metrics and message with a broader set of vital human values – life or death values that influence decision makers. This interactive, multi-media session will explore the competition facing trails and document a range of deeper values that can aid participants in re-casting trails as a life-saving agenda we CANNOT live without locally, regionally, and nationally.

**Speakers:** Diane Banta, Photographer; Gregg Calpino, Regional Practice Center Leader, SHE, Inc.; Steve Buchtel, Executive Director, Trails for Illinois



Courtesy Arizona State Parks

### Trail Ratings: Reducing Injuries and Rescues Through User Education, A Case Study on the Echo Canyon Trail - Camelback Mountain

Wassaja 105

This session will demonstrate to participants how the City of Phoenix, City of Glendale, Maricopa County, City of Scottsdale, Town of Fountain Hills and the City of Tempe developed a campaign that brought these agencies together to develop a standardized trail rating system used Valley wide. The six level rating system was designed to give trail users enough information to be able to make informed decisions when they are contemplating hiking the local mountain and desert parks. The case study of Echo Canyon Trail and Trailhead improvements on Camelback Mountain will be a focus of discussion.

**Speakers:** Chris Ewell, RLA, Landscape Architect II, City of Phoenix Parks and Recreation Department; Jarod Rogers, RLA, Landscape Architect I, City of Phoenix Parks and Recreation Department; Tim Merritt, Park Supervisor, City of Phoenix Parks and Recreation Department; Mark Wisehart, Recreation Coordinator II, City of Phoenix Parks and Recreation Department; Matt Woodson, President and Owner, Okanogan Trail Construction

## MONDAY, APRIL 15

10:00 – 11:15 a.m. continued

### Trails and the DOJ Rule on OPDMDS

#### Wassaja 110

The Department of Justice has issued regulations for “other power-driven mobility devices” under the Americans with Disabilities Act. The challenge for trail managers is to respond to the rule that allows a person who says they have a mobility disability to drive virtually any vehicle on anywhere. We will provide a concise look at what the rule requires and how it affects trails and land managers, whether local, state, nonprofit or federal. We will also provide examples of policies and public information managers have developed to clarify the use of mobility devices. Trail managers will learn specific actions they need to take to comply with the OPDMDS rule, while providing appropriate access to visitors with disabilities.

**Speakers:** Janet A. Zeller, National Accessibility Program Manager, U.S. Forest Service; Stuart Macdonald, Program Manager, National Trails Training Partnership

### Saving the Recreational Trails Program – Again!

#### Wassaja 106

For such a small program, that does so much good, and is completely underwritten by the gas tax dollars paid by off-road recreational vehicles, etc., the Recreational Trails Program has certainly faced more than its share of survival threats. Another is looming. Governors once more have the opportunity to opt out of the Program for FY2014. The “word on the street” is that a number of States are in danger of doing just that! Join leaders from Rails-to-Trails Conservancy, the National Off-Highway Conservation Council (NOHCC), and the American Hiking Society to share ideas and plot strategies for saving our program once more. This session is for everyone, but particularly for those from States considering opting out of RTP in FY2014.

**Speakers:** Marianne W. Fowler, Vice President, Rails-to-Trails Conservancy and American Trails Board Member; Karen Umphress, IT and Project Manager, National Off-Highway Vehicle Conservation Council and American Trails Board Member; Gregory A. Miller, Ph.D., President, American Hiking Society



*Courtesy Mesa Convention and Visitors Bureau*

## MONDAY, APRIL 15

1:45 – 3:00 p.m.

### Reveal the Revenue to Which Your Trails Lead

#### Wassaja 109

Discover how to attain stewards of your trails and greenways in order to increase local trail usage, aid in job retention, increase the value of your trails and promote healthier living. Understand how socially responsible sponsorships cannot only alleviate current budget restrictions but create a revenue stream for trail possessors.

**Speakers:** Ivan Bellotto, President, Bikepath Country; Richard O’Keefe, Vice President, Bikepath Country

### The Blue Mountains, Australia ~ A Place to Keep People on their Feet

#### Wassaja 103

The Blue Mountains in Australia is a UNESCO World Heritage Area and one of Australia’s prime natural wonders. It was, is, and hopefully always will be a mecca for bushwalking. Some of Australia’s oldest walking tracks are here in an extensive and historic network leading people into wild canyons and inspiring wilderness. Whilst millions get their boots on, load their packs and head out for adventure, a small, dedicated team of walking track specialists is working to protect the precious past whilst maintaining opportunities for present and future generations. The story of how old tracks are looked after and loved in the Blue Mountains is of interest for anyone who has ever grappled with how to make old tracks new - or how not to make old tracks new.

**Speaker:** Scott Colefax, Senior Field Officer, New South Wales National Parks and Wildlife Service

### Forest Service Technology and Development Program Leading Trails into the 21st Century

#### Wassaja 110

U.S. Department of Agriculture, Forest Service, National Technology and Development Program has supported the Forest Service Trails Program for many years with equipment and technology transfer that help get work done on the ground. In partnership with FHWA, our results are available to everyone. We have several newly-completed and on-going projects to tell you about, including the new Accessibility Guide For Outdoor Recreation and Trails (AGORT), New U.S. Forest

Service Standard Trail Drawings and Specifications, Hands-On Log Cabin Restoration Guide, Single Track Trail Groomer, Stopping Sight Distance For OHV’s And Snowmobiles, Effects Of All-Terrain Vehicles On Forested Lands And Grasslands, and much more. This session will introduce you to these products, and tell you how to obtain the reports and DVDs at no cost.

**Speakers:** J. Scott Groenier, PE, Project Leader, Structures, U.S. Forest Service T&D Program; Janet Zeller, Accessibility Program Manager, U.S. Forest Service, Recreation and Heritage and Volunteer Resources Staff; Robert Wetherell, Recreation Program Leader, U.S. Forest Service T&D Program

### Trails in the Urban Landscape

#### Wassaja 112

Multi-Use trail development has proven overwhelmingly popular all over the country. How are trails being developed and programmed in our urban core? Join Rails-to-Trails Conservancy (RTC) and the City of Columbia, Missouri’s Bike/Ped coordinator Ted Curtis in exploring how trails have been designed to fit, and be used in an urban context. RTC will share experiences from around the country that came out of their multi-year Urban Pathways Initiative. Columbia Missouri will share how trails have been integrated into existing cities’ infrastructure, what worked, what didn’t, and how they have succeeded in a myriad of circumstances.

**Speakers:** Eric Oberg, Manager of Trail Development, Midwest Region, Rails-to-Trails Conservancy; Ted Curtis, Bike/Ped Program Manager, City of Columbia, MO



# SCHEDULE SUBJECT TO CHANGE

## The Path Forward: Expanding Cycling and Pedestrian Connectivity in Columbia, Maryland

Wassaja 104

As one of the nation's most well-known planned communities, Columbia has earned a reputation for being a great place to live, work, and play. Over the course of the ensuing 45 years, Columbia's pathway network has grown to include 94 miles of paths. For a community of its size, Columbia has one of the most extensive pathway systems in the country. The pathway system was built prior to the era of design standards, navigating the paths is a challenge, and many key connections are lacking as well as links to on-road accommodations for bicycling.

An "Active Transportation Action Agenda" was developed to provide recommendations for creating a more interconnected and comprehensive bicycling and pedestrian circulation system for health, recreation, and transportation purposes. A targeted list of action items that will improve pedestrian and bicycle connections throughout Columbia, with a strong emphasis on the pathways, was developed. These items include increasing connections and reducing missing links; developing principles for pathway design and a wayfinding system; and inspiring and motivating more pedestrians and cyclists which will educate and encourage people of all ages and abilities to use Columbia's pathways.

**Speaker:** Daniel Biggs, Landscape Architecture Practice Leader, Toole Design Group, LLC

## If You Build It, They Will Come: How To Make Your Community a Trails Destination

Wassaja 105

Since the last Trails Symposium was held in Arizona, Pima County and Southern Arizona has seen an explosion of trail development and construction, including new trails parks, skills parks, urban trails, mountain park trails and long-distance trails. This was no accident; it was the result of years of planning, negotiating and persistence. Attendees will learn how to plan, garner support for, design, and build trails that enhance quality of life for residents and attract visitors.

**Speakers:** Steve Anderson, Planning Division Manager, Pima County Natural Resources, Parks and Recreation; Mark Flint, Owner, Southwest Trail Solutions; Rafael Payan, Director, Pima County Natural Resources, Parks and Recreation



Photo by Stuart Macdonald

**MONDAY,  
APRIL 15**

**3:30 – 4:45 p.m.**

## Paths to Participation: How to Develop Engaging Citizen Input Processes

Wassaja 109

The presentation will review key components of engaging citizen input processes as well as provide participants time to plan and develop specific ideas for their own communities/trails. Focus will include policy development (public input) and encouraging trail use (effective promotion, communication, and marketing).

**Speaker:** Jamie Rae Walker, Assistant Professor and Extension Specialist, Texas A&M AgriLife Extension

## Beyond the Trail – Exploring National Trail Corridor Creation With BLM Policy Pioneers

Wassaja 110

The purpose of this presentation is to highlight key features of the newly approved Bureau of Land Management (BLM) policies for the establishment of National Trail Management Corridors on public lands – and more. This presentation describes how the new BLM policies guides the agency in fulfilling its responsibilities under the National Trails System Act, and other laws, for National Scenic and Historic Trails, including inventory, planning, management, and monitoring.

Key policy highlights include determining the nature and purposes of each National Trail; conducting an interdisciplinary inventory of resources, qualities, values, and associated settings and uses; establishing a National Trail Management Corridor based on the inventory; permitting uses that will not substantially interfere with the nature and purposes of the National Trails; making efforts to avoid activities incompatible with the purposes for which the trails were established; and establishing a management standard for trails not yet congressionally designated that are recommended as suitable through an authorized National Trails Feasibility Study, or are under such study.

**Speaker:** Cheryl Blanchard, Archeologist, BLM, Lower Sonoran Field Office

## Parks Paradigm Shift: The Mountain Bike Trail That Changed an Agency

Wassaja 104

Cleveland Metroparks recently built nearly 10 miles of single-track mountain bike trail, successfully navigating the tricky politics of strong support and strong opposition, both internally and externally. This bold move provided much-needed trail access for the region while changing the internal culture of the agency. Attendees will hear firsthand how the process went, what worked and what didn't, and best practices for either establishing a new bike optimized off-road trail system or better managing your current network.

**Speakers:** Nancy Desmond, Director of Special Projects, Cleveland Metroparks; Andy Williamson, Great Lakes Region Director, International Mountain Bicycling Association



Photo by Kathleen Fitzpatrick  
CVL Hike Club www.cvlci.com

## MONDAY, APRIL 15

3:30 – 4:45 p.m. continued

### Design a Trail Worth Traveling To

Wassaja 112

On a very limited budget, a simple but well-designed trail system may be the ingredient to set a community apart and attract visitors. Learn how to plan an initial trail layout.

**Speaker:** Randy Martin, President, Trailscape Inc.

### Trails Lead Everywhere... And Are for Everyone!

Wassaja 103

Access Recreation has developed a web-based document, Guidelines for Providing Trail Information to People with Disabilities, that provides direction and supportive information for public entities, on how better to share information about their trail systems and other outdoor recreation opportunities, and considerations that should be applied during the design of new trails and their features. This topic is not about how to design ADA accessible trails; it is about providing information that would encourage people with various kinds of disabilities to explore trails beyond the few designated ADA accessible trails.

**Speakers:** Richard Bosch, Architect/Accessibility Specialist, Richard Bosch Architect/Accessible Architecture; Georgena Moran, Project Coordinator/Accessibility Specialist, Access Recreation/Mind on Accessibility

### New Force ~ The Growing China's National Trail

Wassaja 105

The trails movement is growing rapidly in China and has contributed great value to the nation: the livelihood of the people, economic, cultural, integration of the tourism industry and the promotion of healthy lifestyles and social harmony. Learn about national trails efforts in China: development and growth, status, construction methods, applications, and how to make each trail a unique experience. Also learn about fund raising efforts, ecological sustainability of trails, rescue, events, and local community economic growth.

**Moderator:** Robert M. Searns, Owner of the Greenway Team and American Trails Board Member

**Speaker:** Nie Jian, General Manager, Mountain Journey (China) Co. Ltd., Beijing, China

## TUESDAY, APRIL 16

1:15 – 3:15 p.m.

### Data Leads to Everyone: Creating Web Maps for Engagement and GIS Application to the Trails Process

Wassaja 108

A trail system is comprised of networks of pathways, but also a network of partners. Sharing information among partners and to the public is vital to trail management success and user enjoyment. Today many trail agencies have geospatial information system (GIS) data, but may not be using that information in ways to meet the needs of all partners. Whether you are mapping trail resources, creating maps for advocacy, understanding connections in your

community, or engaging trail partners to gather data to share the story of your trail, web mapping applications offer the ability to inform, engage, and educate.

This session will also explain the practical use of GIS technology for numerous applications – before, during, and after the actual trail is constructed. Demonstration of how to use technology for trail planning, purchasing department documents, pre/post trail construction, trail map production, emergency markers/public safety response, and subsequent trail maintenance activities following trail construction will also be included.

**Speakers:** Charlyne Smith, GIS Research Associate, North Carolina State University; Robert Chasan, Geographer/GIS Analyst, City of Scottsdale, Arizona; Claire Miller, McDowell Sonoran Preserve Coordinator

### Telling a Better Story

Wassaja 104

"Telling a Better Story" focuses on strategies for captivating your trail audience with provocative, well designed interpretive panels. Get practical advice for developing theme-based messages, establishing budgets, selecting images and design elements, understanding how visitors learn, writing interpretive text, and preparing files for production. Join us for discussions and case studies, and take away valuable tips and techniques to turn ordinary panels into extraordinary experiences. The Foothills Learning Center in Boise, Idaho developed a permanent interactive self-guided accessible "Story" trail for children and adults. Ten reading platforms feature different nature related stories that change monthly throughout the year.

**Speakers:** Jennifer Rigby, Director, The Acorn Group; Erica Fielder, Director, Erica Fielder Studio; Kristin Lundstrom, Environmental Educator/Volunteer Coordinator, City of Boise, Parks and Recreation

### Destination Trails: Connecting People & Places to Bring Vitality to Communities

Wassaja 105

This session will explore the multitude of ways to connect people to trails and places with bikeways. By creating bikeways, trail advocates can generate faster progress on projects and make immediate impact on local communities by providing both tourism and active transportation opportunities. We'll explore two initiatives that promote long distance trails as recreation, transportation, and tourism destinations – both received a final designation as a U.S. Bicycle Route. Linking trails and public places with both on-road and off-road accommodations to urban and suburban communities has proven to shift mode share and can be the impetus for developing bicycle friendly practices. In addition, "destination trails" provide economic vitality to the region. Learn from the experts of these trail initiatives how they view their individual efforts against the greater goal of a transportation system, how they solve challenges, and what tools they've developed to promote bicycle friendly developments in towns of all sizes.

**Speakers:** Ginny Sullivan, Director Travel Initiatives, Adventure Cycling Association; Eric Weis, Trails Program Coordinator, East Coast Greenway Alliance; Tim Mitchell, Bicycle and Pedestrian Section Director, Minnesota Department of Transportation



Photo by Kathleen Fitzpatrick  
CVL Hike Club www.cvlci.com

# SCHEDULE SUBJECT TO CHANGE

CEUs are available!  
Go to Registration Area to purchase and  
view list of eligible sessions. \$25 flat rate.

## Empowering the Next Generation of Trail Stewards

### Wassaja 106

Join the Student Conservation Association and Arizona Trail Association for an inspiring workshop on various youth outreach initiatives that effectively empower the next generation of trail stewards. Urban trails are designed to provide recreation and transportation routes for communities. Learn how the Student Conservation Association has partnered with federal, state, and non-profit agencies in Washington, D.C. to engage community members in trail-stewardship activities while completing much-needed maintenance to heavily used trail networks. Rural communities are often the last to know about the resources in their own backyard. Learn how the Arizona Trail Association is engaging rural youth in the management of the Arizona National Scenic Trail through experience, education and internships.

**Speakers:** Matthew Nelson, Executive Director, Arizona Trail Association; Monique Dailey, D.C. Area Youth Programs Manager, Student Conservation Association

## Healthy Partnerships Build Healthy Trails

### Wassaja 103

Strong partnerships are an essential ingredient in building a healthy trail system. Discover how to build these partnerships and keep them strong. Examples will include how partnering with the National Conservation Corps can help you complete your trail projects and how Corps support youth and community development. If you're outside a Conservation Corps area, learn how creativity played a role in a community development corporation's ability to build and maintain partnerships, competitively secure funding, and maximize the long-term benefits of the Emerald Trail Corps green jobs program. Short presentations will be coupled with a facilitated group discussion to encourage participants to leverage the larger group's knowledge to share their own partnership stories, discuss challenges, solutions, and successes. You will go home with concrete ideas for cultivating meaningful partnerships that last, refining those that aren't currently working, and maybe even meet a new partner at the session!

**Speakers:** Ilyssa Manspeizer, Director, Park Development and Conservation, Mount Washington Community Development Corporation; Kathryn Hunninen, Manager, Park and Community Sustainability, Mount Washington Community Development Corporation; Rob Spath, Executive Director - SW Conservation Corps - Sonoran Desert; Michael Swanberg, Project Coordinator - SW Conservation Corps - Sonoran Desert; Russell Dickerson, Program Coordinator, Coconino Rural Environment Corps; Ben Thomas, Program Director, Rocky Mountain Youth Corps



Photo from Casa Grande Mountain Park

## TUESDAY, APRIL 16

3:45 – 5:00 p.m.

### Traffic on the Trail: User Counts

#### Wassaja 108

This presentation will focus on the key components of trail user count methodologies. Two case studies will be highlighted focusing on vehicle and pedestrian traffic counters in natural areas to track visitation and volunteer counts in metro areas. It will cover software, deployment, data management, troubleshooting, and equipment usage and installation.

**Speakers:** Allison Jones, Trail Specialist—Biological Scientist II, Florida Fish and Wildlife Conservation Commission; Jamie Rae Walker, Assistant Professor and Extension Specialist, Texas A&M AgriLife Extension



Photo from Scottsdale Convention and Visitors Bureau

## Building a Trail to Volunteer Management

### Wassaja 105

The purpose of the presentation is to provide participants with an overview and present results and tools to leverage land management staff resources by using volunteers to assist with motorized recreation issues- a case study in managing volunteers. The presentation will focus on the Arizona State Parks OHV Ambassador Program, a trained group of volunteers who inform the public about where to ride, how to ride safely, what rules and regulations must be followed, and who assists resource agencies to monitor and maintain trails. Participants will receive and review the Ambassador Program Handbook, sample agreements, and examine procedural tools used in planning, organizing, managing, and implementing projects. During a portion of the session, participants will work on next steps in forming a partnership with volunteers to meet mutual goals.

**Speakers:** Chris Gammage, OHV Ambassador Program Coordinator, BLM; Marge Dwyer, OHV Ambassador Program Administrator

## Training and Resources for Building Better Trails

### Wassaja 103

Better training and skills help build more sustainable trails, empower volunteers to be more effective, and help youth develop careers and confidence. This session will present educational opportunities, training providers, and a wide range of resources for trails and greenways. Efforts of the National Trails Training Partnership in promoting and coordinating training will be highlighted.

**Speakers:** Stuart Macdonald, Magazine and website editor, American Trails; Jerry L. Ricciardo, Ph.D., Recreation and Resources Development, Associate Professor, Recreation and Park Management, Eastern Michigan University



## TUESDAY, APRIL 16

3:45 – 5:00 p.m. continued

### Trail Heritage & History: Powerful Elements of the Complete Trail

Wassaja 106

Along with proper layout, maintenance, trailhead amenities, and orientation and navigation signage, the history and heritage of your trail is important for a variety of reasons. Knowing and sharing the history of your trail can both expand sources of funding for interpretation and events and invite a new set of users to your trail. Users become supporters. The Black Canyon National Recreational Trail just happens to be on the alignment of the old Black Canyon and Beaverhead-Grief Hill Sheep Driveways. As the only sheep driveway still in operation in Arizona, it offers something else no other trail can. And the history of sheep in this desert environment has important connections to the state's agricultural economy as well as several cultures.

**Speakers:** Kristine Komar, Principal, Double K Outfit; Stefanie Joy Muscat, Principal, BEVARA; Charles Pregler, Principal, Charles Pregler Associates



Photo from Jeju Olle Foundation

### The Creation of the Jeju Olle Trail (South Korea) and The Birth of a World Trail Network

Wassaja 104

This session will introduce the Jeju Olle Trail and the new possibilities that have grown from it. Following three World Trail Conferences coordinated by the Jeju Olle Foundation, held on the small, lovely island of Jeju - the World Trail Network was born. Learn about the participating organizations that have been working together to launch this new global movement. The mission is to help share the current issues and common values of trails in the world, to promote cooperation amongst trail advocates, and to establish the trail industry towards sustainable development.

**Speakers:** Soo-jin Lee, Director of Visual Communication Department, member of World Trail Network Committee; Dr. Hui Jung, Board Member of the Korea Trails Association, member of World Trail Network Committee; Galeo Saintz, Rim of Africa Trail, Chairman of World Trail Network Committee

## WEDNESDAY, APRIL 17

8:30 – 9:45 a.m.

### Trail Design and Construction in Mozambique: Building a Trail Program for Transportation and Tourism in Gorongosa National Park

Wassaja 102

Designing trails and developing a trail program in and around a newly designated mountain unit of a famous Mozambican National Park recovering from 16 years of civil war will be the context for this presentation. Topics presented will be designing and building trails to meet the needs for tourism, rural farmers, and business people in Africa; leveraging community strengths in carrying out training in trail layout and construction; and the challenges and possibilities of sustainable trail building in a region looking to develop employment and business opportunities beyond subsistence agriculture. Two of the American members of the project team from the National Park Service and U.S. Forest Service, detailed to the U.S. Department of the Interior International Technical Assistance Program for the Gorongosa Restoration Project, will deliver the presentation.

**Speakers:** Jeff McCusker, Trail Manager, North Country National Scenic Trail, National Park Service; Don Kelly, Trail Foreman, San Juan National Forest, U.S. Forest Service

### Research in Recreational Conflict: What It Teaches Us About Better Trail Design and Management

Wassaja 113

The purpose of this presentation is to provide an easy to understand and practical overview of past and current research related to trail conflict in a way that enables trail professionals to improve trail design and trail management. This session will begin with a presentation that introduces a social science-based "behavioral approach" to help understand why trail users do what they do. It will then move into an overview of the research related to trail conflict with an emphasis on what things influence the types and levels of problems that can occur and what principles and practical guidance we can draw. Most importantly, the session will engage and involve those present in applying the principles and knowledge they have learned. We will do this by selecting several actual trail conflict situations the participants are facing in their home jurisdictions and working in small teams (hopefully including people in each team who participate in the trail activities in question) to develop integrated approaches to addressing those conflicts that could actually be implemented. Teams will report out on their proposed approaches and receive feedback from the full group.

**Speakers:** Roger L. Moore, Associate Professor, Department of Parks, Recreation and Tourism Management, North Carolina State University; Brendan Adams, Graduate Student, Department of Parks, Recreation and Tourism Management at North Carolina State University

Follow us at  
**Twitter.com/American\_Trails**

and  
**Facebook.com/AmericanTrails.org**



# SCHEDULE SUBJECT TO CHANGE

## The Business of Trails ~ Case Studies of Five Canadian Trails

### Wassaja 109

This session will provide case studies of five Canadian trails from across the country, each of which is an acknowledged leader in one particular field of trail development: tourism, transportation, environment, recreation, and health. For each trail, we will review the top three policy decisions that molded and directed their development, examine how and why these policies contributed to each trail's achievements, and consider what new policies each believes are necessary to ensure their continued success.

In addition, we will conduct a similar examination of successful policy for the Trans Canada Trail which, at 23,000 kilometers, is the longest recreational trail development in the world.

**Speaker:** Michael Haynes, Director, TransActive Solutions

## Enhancing Trail Accessibility, Connectivity, and Outdoor Developed Areas with Modern Technologies

### Wassaja 110

This program will provide an overview of the needs and processes surrounding assessments of trails and outdoor constructed features. A real world application will be presented and discussed that demonstrates how creek ways are being used to connect communities city-wide and how its trails system has been made more interesting and user friendly through the use of QR Codes and the High Efficiency Trails Assessment Process (HETAP).

**Speakers:** Brandon Ross, Special Projects Manager, City of San Antonio Parks and Recreation Department; Peter Axelson, Director of Research and Development, Beneficial Designs, Inc.; Nathan Tolbert, GIS Assessment Coordinator, Beneficial Designs, Inc.

## Trails Unlimited (TU): "Building Bridges" An Easier Way of Working With the U.S. Forest Service

### Wassaja 103

How hard has it been to get a project completed with the Forest Service? TU has the experience and knowledge to walk you through the process.

**Speaker:** Jason Stinchfield, Executive Officer, U.S. Forest Service, Enterprise Program

## Creating Trails and Bike Skills Parks in Urban Areas

### Wassaja 106

The presentation will focus on creating trails and bike skills areas along greenways, pathways, and park space in an urban environment. The purpose is to bring the mountains and trails to the city and create areas where children and adults can attain the skills to become responsible and capable trail users. This will create a healthier tomorrow and give people the confidence to become bike commuters and recreational cyclists thus reducing obesity and many of the associated health risks from being inactive.

**Speaker:** Judd de Vall, Principal, Alpine Bike Parks

## Planning and Designing Cross Country Skiing And Winter Trails in an Era of Climate Change

### Wassaja 105

Cross country skiing includes an estimated 10.2 million participants, up from 3.5 million in 2007, making it one of the fastest growing trail-based activities. Other winter activities, such as snowshoeing and winter mountain biking, have also

become popular in areas with reliable snow. As these activities become more popular, traditional locations have less predictable snowfall, emphasizing a need to re-think the planning, design, and management of Nordic skiing and winter-based trail systems.

Based on examples from across the United States and internationally, this presentation will review fundamental trail design considerations for skiing and winter trails, with new techniques and approaches to address issues of warmer winters and less snowfall. These approaches include considerations of site location, trail width, surface, gradient and slope aspect (orientation), grooming equipment, snowmaking, and alternative surfaces. Additionally, the presentation will provide management approaches to diversify and provide financially stable trail-based winter activities, including both opportunities for competition and events as well as recreation, along with four-season use of trails.

**Speaker:** John Morton, Principal and Founder, Morton Trails

## Something For Nothing, Something For Everyone ~ Introducing the Tri-Modal Leisure Corridor

### Wassaja 112

Some of America's most exciting and interesting trail destinations are hidden in plain sight, unrecognized by the communities that they link, often with existing infrastructure. Tri-Modal Leisure Corridors (TMLC's) combine roads (for cars) and rail, parallel non-motorized routes (for cyclists and hikers), and parallel navigable waterways (for paddlers) – something for all ages and all interests. Around Lake Michigan for example, the existing Lake Michigan Circle Tour, along with existing and proposed U.S. Bicycle Routes and the growing Lake Michigan National Recreation Water Trail, will combine to form a loop TMLC more than 1,000 miles long. Learn how to recognize, plan, and map your TMLC.

**Speakers:** Dave Lemberg, Associate Professor, Department of Geography, Western Michigan University; Virginia "Ginny" Sullivan, Director of Travel Initiatives, Adventure Cycling Association; James Lewis, Associate Professor, Department of Human Performance and Health Education, Western Michigan University



## WEDNESDAY, APRIL 17

8:30 – 9:45 a.m. continued

### Have Trimble, Will Travel: National Trails Inventory of the U.S. Fish & Wildlife Refuge System

Wassaja 104

In 2011 and 2012, the Student Conservation Association, in partnership with the U.S. Fish and Wildlife Service (USFWS) and the Federal Highway Administration's Office of Federal Lands Highway, conducted a survey of all trails within the USFWS refuge system. A total of 16 interns travelled the nation from Alaska to Puerto Rico to geo-locate trails, structures, and improvements, and to identify deficiencies within the trails system. The resulting tabular, photographic, and digital data became part of the FWS maintenance database, and FHWA's transportation assets inventory for Federal Land Management Agencies. This session will highlight programmatic structure, logistics, methods used to gather the data, the educational experience provided to interns in GPS use, GIS data processing, and the use of technology to assist in land management planning. Participants will have the opportunity to examine and work with both the GPS equipment and field "kit" utilized. Members will be on hand to discuss the impact of the program on their lives from the extensive travel to job-skills obtained.

**Speaker:** Alex Olsen, Program Manager, Student Conservation Association

## WEDNESDAY, APRIL 17

10:15 – 11:30 a.m.

### The Business of Trails ~ An Australian Example

Wassaja 109

This workshop will showcase the Western Australian Munda Biddi Trail, a long distance bush cycling experience, as an example of a trail management business model, with a particular focus on financial sustainability. Additionally, an overview of international trail management business models will be provided and discussed.

**Speaker:** Kerstin Stender, Trails Coordinator and Student - Master in Tourism Management, Department of Environment and Conservation and Edith Cowan University

### A is for Access

Wassaja 103

Access for people with disabilities has been a topic of increased interest over the past decade. With the new guidelines regarding other power driven mobility devices, the topic has come to the forefront in many areas. However, there are groups who have been working with the disabled for years, and there are programs that have been designed to introduce the disabled or re-introduce our wounded veterans to trail systems that they can utilize without any special requirements. This presentation will showcase some of these programs.

**Speakers:** Dan Kleen, President of the Board, National Off-Highway Vehicle Conservation Council; Karen Umphress, IT and Project Manager, National Off-Highway Vehicle Conservation Council



Photo by Kathleen Fitzpatrick  
CVL Hike Club www.cvl.com

### Developing Your Operations/Maintenance Manual

Wassaja 105

This presentation will lead managers through the process of designing and developing a useable operations and maintenance plan for their trails and/or parks. With audience participation we will outline the various maintenance responsibilities that need to be included in an operations manual. Armed with that material, we will enable participants to gain a thorough understanding of how to develop this for each aspect of their own operations and follow through with the completion of a manual after the symposium.

**Speaker:** Jim Schneider, President, Trail-Works

### Black Canyon Trail: Linking Arizona Communities Past and Present

Wassaja 102

This presentation will show how the Black Canyon National Recreation Trail is evolving into a trail tourist destination through collaboration of government agencies, non-profit organizations, trail user groups, and communities. The desire is to encourage other trail managers and organizations to develop trail tourism in their areas as a way to provide healthy outdoor activities and a foundation for economic development.

**Speakers:** Bob Cothorn, Board member, Volunteer Coordinator, Black Canyon Trail Coalition; Linda Slay, President, Black Canyon Trail Coalition; Troy Rarick, Founder/General Manager, Over the Edge Sports



Photo by Fort McDowell Adventures

# SCHEDULE SUBJECT TO CHANGE

CEUs are available!  
Go to Registration Area to purchase and  
view list of eligible sessions. \$25 flat rate.

## The NRT Program: National Recognition for Your Local Trail

### Wassaja 112

The National Recreation Trail (NRT) Program recognizes existing trails that connect people to local resources and improve their quality of life. This session will provide a brief history and overview of the NRT program, as well as highlight the growing benefits available to trail managers. Program benefits include promotion, technical assistance, networking, and national recognition.

**Speakers:** Stuart Macdonald, Magazine and website editor, American Trails; Helen Scully, National Recreation Trails Coordinator, Department of the Interior; Lelia Mellen, Outdoor Recreation Planner, Rivers, Trails and Conservation Assistance, National Park Service

## BLM Year 2020 ~ A Clear Vision For Travel and Transportation Management, Planning, and Implementation

### Wassaja 106

This presentation will provide a status update on the BLM's progress since the year 2000 (the year the BLM's OHV Strategy was published, followed by the Mountain Bicycling Strategy) toward its goal of "Establishing a long-term, sustainable, multimodal transportation system for public access to and across BLM lands." A panel of two BLM experts will present information of policy, planning, and education related to travel management as well as highlight success stories from around the nation.

**Speakers:** William Gibson, Trails and Travel Management Coordinator, National Trails Lead, AZ, BLM; Tom Bickauskas, Travel Management Coordinator, Hassayampa Field Office, Phoenix, AZ



Courtesy Scottsdale Convention and Visitors Bureau

## Rails-With-Trails: The Latest Facts and Trends

### Wassaja 104

Rails-to-Trails Conservancy (RTC) has been conducting research over the past two years examining the safety issues of Rails-with-Trails (RWT). Based on the findings from a forthcoming RTC report, this session will provide a fresh statistical look at RWT and safety records from trails across the country.

**Speakers:** Patricia Tomes, Program Manager, Rails-to-Trails Conservancy; Eric Oberg, Manager of Trail Development, Rails-to-Trails Conservancy

## Navigating Map-21: "Maximize Federal Funding for Your Trail"

### Wassaja 110

This session will begin with an overview of the new transportation law, MAP-21, to heighten understanding of the new bill, programs, and opportunities for biking and walking trails. It will address why some communities use the full range of federal transportation funding programs for bicycling and walking instead of relying on a limited number of dedicated sources by: 1. Describing the requirements and opportunities of funding programs underutilized for bike/ped; 2. Showcasing best practices of advocates working with public agencies to institutionalize funding priorities for biking and walking; and 3. Introducing favorable factors for policy changes.

**Speakers:** Brigid O'Keane, Advocacy Advance Program Manager, Alliance for Biking and Walking; Darren Flusche, Policy Director, League of American Bicyclists



Photo by Amy Ford

An advertisement for the American Trails Online Bookstore. It features several book covers including 'Natural Surface Trails by Design', 'The Nature Principle', 'Trail Tales', 'Managing Mountain Biking', 'LIGHTLY ON THE LAND', and 'Urban Sprawl and Public Health'. A large blue circular badge says 'use coupon code ITS2013 for FREE SHIPPING'. At the bottom, it says 'FREE SHIPPING ON BOOKS PURCHASED DURING THE SYMPOSIUM' and 'Books will be shipped via USPS media mail within 2-3 weeks following the conference.' There is also a small '25 YEARS American Trails' logo.



## Hours for Silent Auction

The Silent Auction items will be on display in the exhibit hall. Silent Auction bidding begins on **Sunday, April 14 at 2:00 p.m. and closes Tuesday, November 16 at 6:30 p.m.** If you're a winner of a silent auction item(s) you can pay for it soon after the auction closes in the exhibit hall from 6:00 to 7:00 p.m. or the following morning at the Registration Area. Acceptable forms of payment are credit card (Visa or MasterCard), check, or cash (onsite only).

Thanks to our generous contributors, we have a wonderful selection of auction items from which to choose. Included are shirts, jerseys, jackets, backpacks, a variety of trail books and gift baskets, gift cards, gift certificates to hotels & vacation packages, books, wine, a variety of tickets and gift certificates, a signed football from the Arizona Cardinals and a signed basketball from the Phoenix Suns, an African Safari trip, a trail bench made of recycled plastic material engraved with the 2013 Symposium theme, and more!

## Thank-you to our generous auction donors

Acorn Naturalists  
African Eyes Travel  
American Discovery Trail Society  
Appalachian Trail Conservancy  
Arizona Cardinals  
Arizona Diamondbacks  
Arizona Highways  
Arizona Opera  
Arizona Science Center  
Arizona Theatre Company

Atkins  
AZ Trail Association  
Back Country Horsemen of America  
Berntsen International, Inc.  
BlueSky  
Bob Madgic, Author  
CA Trails & Greenways Conference  
Castles N Coasters  
Club Ride Jersey  
Desert Botanical Garden

Diamondbacks  
Energiser  
Grace Hospitality Group  
Grand Canyon Railroad  
Hilton Sedona Resort & Spa  
J.L. DARLING CORP  
MacDonald's Ranch  
Marriott Hotels & Resorts  
Mountain Khakis  
Pannier Graphics  
Phoenix Suns  
Phoenix Symphony  
Plastic Recycling of Iowa Falls  
PRP Wine International Inc.  
Residence Inn by Marriott  
Rhino Marking & Protection Systems  
Rockart Signs & Markers  
Scottsdale Resort & Conf. Ctr.  
Sportsmen's Warehouse  
Stellar Physical Medicine  
Terrabilt Wayfinding Systems  
The Chain Gang Bike Shop  
The Keg Steakhouse & Bar  
The Phoenix Zoo  
Tools for Trails  
Town of Pinetop Lakeside  
Tread Lightly!  
Tres Rios Golf Course at Estrella Mtn.  
Wet'n'Wild  
Z-Gear



## Hours for Live Auction

The Live Auction will be held during the "Trails Rock" Party at the La Puesta del Sol on the Fort McDowell Yavapai Nation (a short 5-mile drive from the Radisson) on Monday, April 15. You can view the Live Auction items beforehand in the Silent Auction area in the exhibit hall.

## Happy Anniversary!

- Ozark Trail Association – 10 years
- Volunteers for Outdoor Arizona – 10 years
- Hike the Hill – 15 years
- Mississippi River Trail – 15 years
- Coalition for Recreational Trails – 20 years
- National Trails Day – 20 years
- Trans Canada Trail – 20 years
- **American Trails – 25 years**

- Pennsylvania Equine Council – 25 years
- American Hiking Society – 35 years
- Back Country Horsemen of America – 40 years
- Five Rivers Metroparks – 50 years
- Illinois Prairie Path – 50 years
- Golden Gate Bridge – 75 years
- The Appalachian Trail – 75 years
- **State of Arizona Centennial – 100 years**



# American Trails International Trails Symposium **RAFFLE**

## WIN THIS QUILT!

### Tickets

\$5 each  
5 for \$20  
10 for \$40  
20 for \$75  
30 for \$100

Available online  
and at the door.



American Trails | April 14-17, 2013 | ARIZONA

*Trails Lead Everywhere*

85" x 85" 'Prairie Star' quilt.

Thank you to John Favro, owner of "Trails Guy" and American Trails Board Member, for generously donating this lovely quilt. The quilt was lovingly made by John's Wife, Susan Favro of "Sew Much Smarter."

**Draw Date: April 17, 2013  
at the Symposium Closing Luncheon**

**Buy tickets at [www.AmericanTrails.org/store](http://www.AmericanTrails.org/store)  
or at the symposium registration desk.**

You do not have to be present to win.

Proceeds go to support the work American Trails does to serve the trails community all year long. For additional information contact the American Trails office at 530-547-2060 or at [symposium@americantrails.org](mailto:symposium@americantrails.org).

Learn more about the International Trails Symposium and American Trails:  
[www.AmericanTrails.org](http://www.AmericanTrails.org).





# Planning Team and AT Board

## American Trails

P.O. Box 491797  
Redding, CA 96049

(530) 547-2060  
(530) 547-2035 fax

trailhead@americantrails.org  
www.AmericanTrails.org

## With gratitude

Join us in thanking the members of the Planning Team for the 21st American Trails International Trails Symposium.

## Symposium Chairs

### Ellen Bilbrey

Public Information Officer, Arizona State Parks

### Tom Fitzgerald

Lands Administrator, Central Arizona Project

### Pam Gluck

Executive Director, American Trails

### Candace Mitchell

Communications Specialist & Exhibit Hall Coordinator,  
American Trails

### Joe Taylor

American Trails Board

## Planning Team Members

**Jean Anderson**, Arizona Horse Council

**Amy Camp**, Community Tourism Professional

**Nicole Armstrong-Best**, Arizona State Parks

**Robert Baldwin**, Arizona State Parks

**Cate Bradley**, National Park Service – RTCA Program

**Francesca Carozza**, Fountain Hills CVB

**Bonnie Davis**, Two Horse Enterprises

**Maureen DeCindis**, Maricopa Association of Governments

**Monica Enriquez**, Arizona State Parks

**John Favro**, Trails Guy

**Bill Gibson**, Bureau of Land Management – AZ

**Dan Gronseth**, City of Phoenix

**Dan Gruber**, McDowell Sonoran Conservancy

**Scott Hamilton**, City of Scottsdale

**Jan Hancock**, Hancock Resources, LLC

**Rand Hubbell**, McDowell Mountain Regional Park

**Michelle Huebner**, Radisson Fort McDowell Hotel

**Nick Lund**, TRACKS – Pinetop/Lakeside

**Mark McDermott**, Fountain Hills Visitors Bureau

**Annie McVay**, Arizona State University

**Alex Oreschak**, Maricopa Association of Governments

**Phyllisalley**, Bureau of Land Management – AZ

**Rory Robinson**, National Park Service – RTCA Program

**Jeff Spellman**, Retired, Phoenix Parks & Recreation Department

**Nikki Stein**, Assurant Specialty Property

**Kent Taylor**, Pinal County

**Sharon Wallace**, Tonto National Forest

**Gloria Yazzie**, Arizona State Parks

## American Trails Staff

**Pam Gluck**, Executive Director

**Candace Mitchell**, Executive Assistant & Communications Specialist, Exhibit Hall Coordinator

**Melina Taylor**, National Trails Awards Coordinator & Registration Coordinator, Administrative Assistant

**Afton Kelly**, RTP Database Coordinator, Administrative Assistant

**Stuart Macdonald**, Website Manager, *American Trails Magazine* Editor

**Mike Bullington**, Website & Graphics Designer

## American Trails Board

### Executive Committee

#### Bob Searns, Chair

The GreenWay Team, Inc.

#### Roger Bell, Vice-Chair

Professional Trailbuilders Association

#### Marianne Fowler, 2nd Vice-Chair

Rails-to-Trails Conservancy

#### Terry Hanson, Treasurer

City of Redding Community Services

#### Jenny Rigby, Secretary

The Acorn Group, Interpretive Planning and Design

#### Mike Passo, Accessibility Expert

Elakah Expeditions LLC & Professional Trailbuilders Association

**Scott Linnenburger**, Chair, Development Committee  
Kay-Linn Enterprises

**Pam Gluck**, Executive Director, American Trails

### Board of Directors

**Amy Camp**, Community Tourism Professional

**John R. Collins, Jr.**, PhD, University of North Texas

**Terry Durby**, Iowa State Snowmobile Association

**John Favro**, Incoming Chair, Trails Guy and Retired USDA Forest Service

**Mylon Filkins**, DVM, Back Country Horsemen of America

**Dave Larsen**, Atkins

**Joe Taylor**, Quad Cities Convention and Visitors Bureau

**Karen Umphress**, National Off-Highway Vehicle Conservation Council

**Terry Whaley**, Ozark Greenways

## Got Questions? We've Got Answers! Are you confused? Lost?

The Symposium Volunteers are here to help! Just look for the brown shirts with **Trail Boss** written in lime green on the back of their shirts!

## How do I stay up on "breaking" Symposium news?

Follow "American Trails" on Twitter for updates, changes, and hot news!

## Where can I turn if I have a question or need information?

The Registration/Merchandise Area in the Radisson Conference Center. You can get information on your mobile workshop; buy a Symposium shirt; purchase books; and get general information about the Symposium or the local area. "Trail Bosses" (volunteers), in brown shirts with **Trail Boss** written in lime green on the back, can also provide assistance.



## Merchandise & Books

Check out the Registration Area for Symposium shirts (made of 100% recycled plastic bottles!), the best in trailbuilding books (**FREE shipping for books purchased during the Symposium!**), and raffle tickets to win an 85" x 85" Prairie Quilt. Bring home souvenirs for your kids, spouse, colleagues, friends, and don't forget your boss!



## If I'm staying at the Holiday Inn or Comfort Inn, how do I get to the Radisson?

Shuttle buses will be running to and from the Radisson from each hotel on a regular schedule. Refer to the shuttle bus schedule flyer in your Registration packet. Schedules are also posted at each hotel and in the Registration Area at the Radisson.

## Accessible Transportation

For your accessibility transportation needs, please go to the Registration Area and they will be happy to assist you.

## Where can I buy a good latte?

There is a Starbucks located in the Town of Fountain Hills.

## How can I get wireless internet service while at the Symposium?

Wi-Fi access is free throughout the Radisson Hotel, conference center, and Exhibit Hall tent.

## Where do I turn in my PowerPoint so the AV team can preload my presentation?

Turn it in at the Registration Area. Please be sure the name of your presentation, your name, your cell phone number, and the date and time of your presentation are included with whatever you turn in.

## I lost my badge. What do I do?

Go to the Registration Area and they will be happy to help you.

## I need to buy a meal or workshop ticket. Where do I go?

Head to the Registration Area.

## Are there trails, restaurants, shopping, and entertainment nearby?

With the Radisson Hotel being in a more remote area than our typical Symposium locations, these attractions are not within walking distance. But there is a lot to do within Fountain Hills, Mesa, Scottsdale, and the surrounding area. Visit the Fountain Hills, Mesa, and Scottsdale CVB tables in the Registration Area for brochures, guides, and maps.

## How do I get to the nearest trail?

The "Legacy Trail" is in the works right onsite at the Radisson Hotel... Or, head north and walk down to the Verde River. Or, walk up the meandering lane across from the front of the Radisson to the We-Ko-Pa Golf Course for gorgeous views of the Sonoran Desert.

## Where do meal functions take place?

Keynote Luncheons, the Awards Banquet, and Trail Talks are held in the Wassaja Ballroom in the conference center. The Opening Reception and Happy Trails Hours will be held in the Exhibit Hall tent.

## Where are the Concurrent Sessions held?

At the Radisson Conference Center. This Program lists the room number next to each session. The meeting room layout appears on the back cover.

## Where do I meet to go on my mobile workshop?

All mobile workshops will depart from the Transportation Pick-Up and Drop Off Location on the west side of the Exhibit Hall tent. See map on the back cover.

## What if I missed my mobile workshop transportation?

You must be at the bus 15 minutes prior to the time to leave (30 minutes recommended). No one will be allowed to take their own vehicle to the workshop site. Refunds will not be given for people who miss their ride. Sorry!

## How do I get to the "Trails Rock" Party at the La Puesta del Sol?

There will be complimentary transportation to and from all three of the host hotels. The buses will have which hotel they are going to/from—please be sure to get on the right bus! Transportation starts at 6:30 p.m. and runs through 11:30 p.m. (in no more than 30 minute intervals).

## Where can I learn about the latest in trail technologies, products, and services?

Visit the extensive Exhibit Hall to experience one of the largest trails trade shows in the United States, and enjoy the trails and greenways system! Please also visit the Trail Tools Equipment Expo that is taking place onsite at the Radisson, just steps away from the Exhibit Hall tent. The Trail Tools Equipment Expo will be open during the same hours as the Exhibit Hall. After the Symposium ends, you can always visit the Business Directory on the American Trails website at [www.AmericanTrails.org](http://www.AmericanTrails.org) and click on the Business Directory tab at the top.

## Guide to Sponsors & Exhibitors, Presenters & Attendees

This online resource contains the contact list and description of products and services offered by exhibitors and sponsors; and bios, phone, and email addresses for all presenters. Following the Symposium, we will also include a listing of attendees. In keeping with the Symposium theme, we did not print the Guide this year. Instead, it is available on the Symposium website at [www.AmericanTrails.org/2013](http://www.AmericanTrails.org/2013).

## Accessibility

American Trails is committed to providing equal access for attendees and their guests. If you have any special needs with regards to your hotel, please contact the hotel front desk. Please contact the Registration Area for any other special needs.

## Is there a Business Center?

The Radisson Hotel has a Business Center to the left of the check-in desk down the hallway, and it is complimentary for Symposium attendees.

## Is there a Fitness Center?

The Radisson Hotel has a Fitness Center to the left of the check-in desk down the hallway, and it is complimentary for Symposium attendees to use.

## Is there a Spa?

The Radisson's Amethyst Spa is to the left of the check-in desk down the hallway, and offers a 20% discount on "a la carte" spa services for Symposium attendees.

## Where can I eat onsite?

The Radisson grounds feature the following restaurants: Ahnala (in the conference center), We-Ko-Pa Grill at the Clubhouse (best place for breakfast with a view!), Ah-Ha-Qwah-Ja, Café 87, Silver Platter, Red Rock Buffet, Noodles Sushiya, and even a New York Deli! And, the Radisson offers room service.

## Where can I play a round of Golf in the Sonoran Desert?

The onsite, Award Winning We-Ko-Pa Golf Course is offering exclusive tee-time discounts for Symposium attendees. Check at the hotel front desk.

## Bike Rentals

Arizona Outback Adventures offers bicycle rentals at a daily rate. They rent road, mountain, bikes for children, comfort and touring, tandem, tag-along bikes, and bike racks. They are located in North Scottsdale at the foot of the McDowell Mountains. If you don't have means to pick your bike up at their location, they offer a delivery service to your hotel as well. Delivery available for 24 hour rental minimum; advance reservations required; exceptions apply. For prices and reservations please visit their website at [www.aaa-adventures.com](http://www.aaa-adventures.com) or call (480) 945-2881. Store Hours: Monday-Saturday: 9:00 a.m. – 6:00 p.m. and Sunday: 9:00 a.m. – 1:00 p.m.

## How can I become a member of American Trails?

Find membership forms in your registration packet, at the Registration Area, or at the American Trails table next to the Registration Area. You can also join online at [www.AmericanTrails.org](http://www.AmericanTrails.org). **Please join our network and support the work we do to serve the trails community throughout the year!**





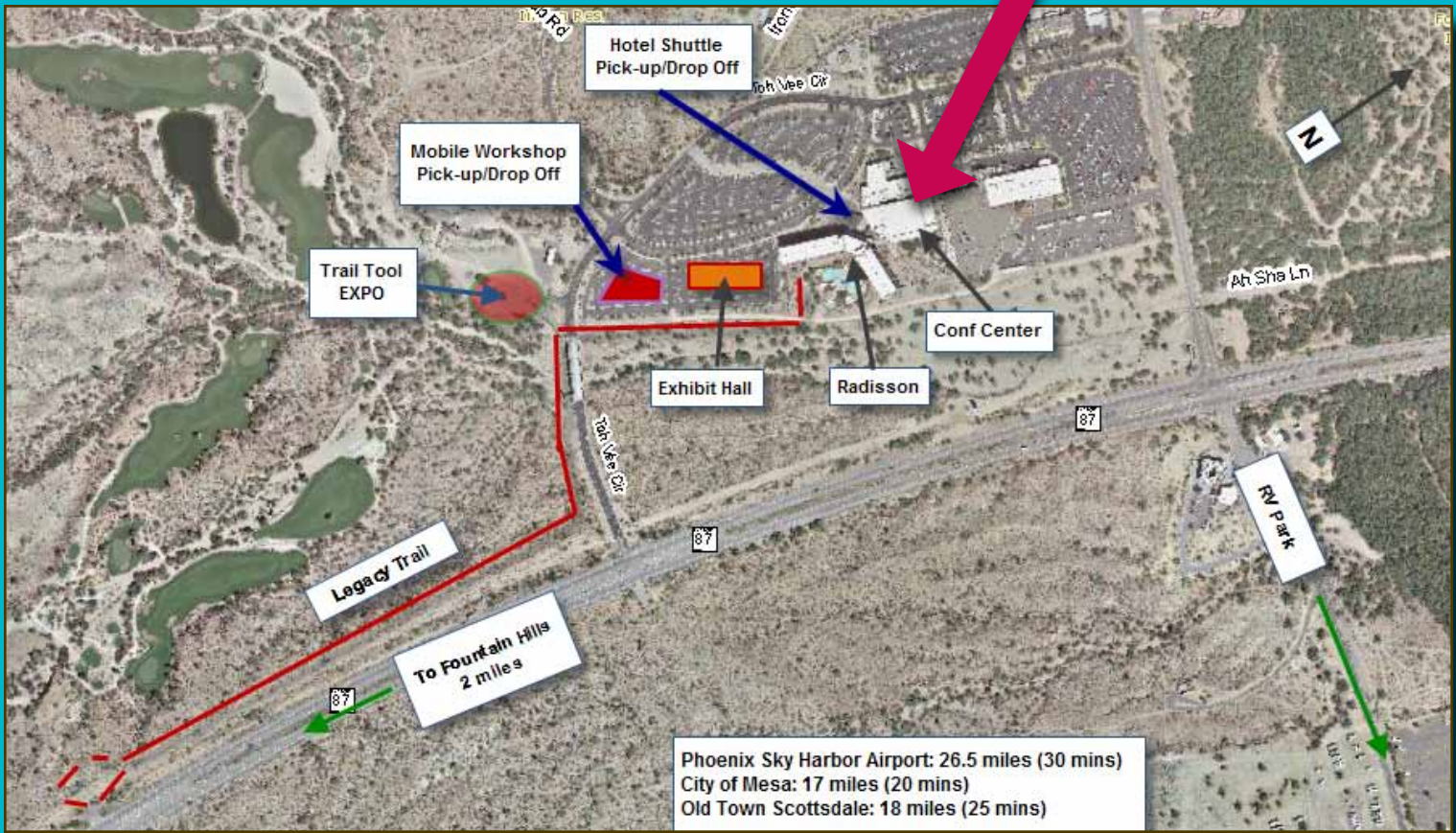
# International TrailsSYMPOSIUM

American Trails | April 14-17, 2013 | ARIZONA

Wassaja Conference Center

Fort McDowell Yavapai Nation  
Radisson

Fountain Hills, Arizona



**TRAILS LEAD EVERYWHERE!**